



A
13-046-175
14k Y/W
Round



B
13-141-050
14k Y/W
Round



C
13-143-050
14k Y/W
Round



D
13-152
14k Y/W
Round



E
13-154-050
14k Y/W
Round



F
13-162-033
14k Y/W
Round



G
13-151-100
14k Y/W
Round



Stones NOT
Included



H
13-128 14k Y/W
Round



I
11-671 14k Y/W
Round



J
13-149
14k Y/W
Round

ALL WEIGHTS ARE APPROXIMATE

Southwestern

Findings, Mountings, Tools and Wedding Bands

Mountings

A	13-046-175	1) 1ct & 31) .015ct - 3.85 dwt
B	13-141-050	1) .50ct & 27) .01ct - 2.99 dwt
C	13-143-050	1) .50ct & 30) .01ct - 2.24 dwt
D	13-152-100	1) 1ct & 72) .01ct - 3.09 dwt
D	13-152-150	1) 1.50 & 64) .01ct - 3.21 dwt
D	13-152-200	1) 2ct & 46) .01ct - 4.14 dwt
E	13-154-050	1) .50 & 36) .01ct - 3.69 dwt
F	13-162-033	1) .33 & 10) .04ct - 3.70 dwt
G	13-151-100	1) 1ct & 44) .015ct - 2.87 dwt
H	13-128-025	1) .25 & 24) .01ct - 2.90 dwt
H	13-128-050	1) .50, 14) .015 & 10) .01ct - 2.90 dwt
H	13-128-075	1) .75, 14) .015 & 10) .01ct - 2.90 dwt
H	13-128-100	1) 1ct, 14) .015 & 10) .01ct - 2.90 dwt
H	13-128-150	1) 1.50, 14ea) .02 & .01ct - 2.90 dwt
H	13-128-200	1) 2ct, 12) .03 & 16) .01ct - 2.90 dwt
I	11-671	10) .02 & 4) .01ct - 3.50 dwt
J	13-149-100	1) 1ct & 4) .05ct - 2.95 dwt

Matching Band

\$454 Y, \$462 W	13-046-175WR	19) .015ct - 2.20 dwt	\$272 Y, \$279 W
\$382 Y, \$390 W	13-141-050WR	12) .01ct - 1.93 dwt	\$248 Y, \$255 W
\$279 Y, \$287 W	13-143-050WR	14) .01ct - 1.43 dwt	\$200 Y, \$207 W
\$375 Y, \$382 W	13-152-100WR	23) .01ct - 2.22 dwt	\$264 Y, \$271 W
\$475 Y, \$482 W	13-152-150WR	21) .01ct - 2.07 dwt	\$264 Y, \$271 W
\$493 Y, \$500 W	13-152-200WR	19) .01ct - 2.08 dwt	\$245 Y, \$252 W
\$441 Y, \$448 W	13-154-050WR	40) .01ct - 3.16 dwt	\$370 Y, \$377 W
\$434 Y, \$441 W	13-162-033WR	15) .015ct - 2.82 dwt	\$334 Y, \$341 W
\$354 Y, \$362 W	13-151-100WR	63) .015ct - 2.10 dwt	\$265 Y, \$272 W
\$275 Y, \$283 W	13-128-025WR	17) .01ct - 1.56 dwt	\$214 Y, \$221 W
\$312 Y, \$319 W	13-128-050WR	15) .015ct - 2.20 dwt	\$269 Y, \$277 W
\$322 Y, \$329 W	13-128-075WR	15) .015ct - 2.02 dwt	\$255 Y, \$262 W
\$327 Y, \$334 W	13-128-100WR	16) .015ct - 2.62 dwt	\$269 Y, \$277 W
\$404 Y, \$412 W	13-128-150WR	15) .02ct - 2.76 dwt	\$312 Y, \$319 W
\$466 Y, \$474 W	13-128-200WR	14) .03ct - 2.78 dwt	\$342 Y, \$350 W
\$356 Y, \$363 W	11-671WR	10) .02 & 4) .01ct - 2.62 dwt	\$356 Y, \$363 W
\$358 Y, \$365 W	13-149-100WR	7) .05ct - 3.23 dwt	\$389 Y, \$396 W



A
13-153
14k Y/W
Round



B
19-244-130
14k Y/W
Round



C
13-131
14k Y/W
Round



D
13-132-050
14k Y/W
Round



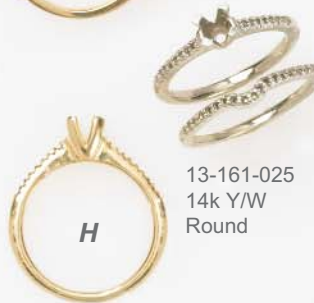
E
13-142
14k Y/W
Square/Round



F
13-024-100
14k Y/W
Round



G
13-155-075
14k Y/W
Round



H
13-161-025
14k Y/W
Round



I
13-045-150
14k Y/W
Round



J
13-048-150
14k Y/W
Round



K
13-127
14k Y/W
Round

Mountings

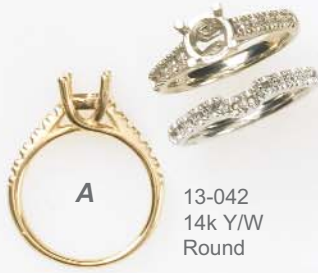
A	13-153-075	1) .75, 2) .03 & 36)	.01ct - 3.84 dwt	\$455 Y, \$462 W
A	13-153-100	1) 1ct, 2) .03 & 36)	.01ct - 3.99 dwt	\$467 Y, \$474 W
B	19-244-130	1) .30, 2) .25 & 6)	.03ct - 3.30 dwt	\$389 Y, \$396 W
C	13-131-050	1) .50 & 28)	.01ct - 4.87 dwt	\$557 Y, \$564 W
C	13-131-100	1) 1ct & 28)	.01ct - 6.12 dwt	\$573 Y, \$580 W
D	13-132-050	1) .50 & 40)	.01ct - 2.44 dwt	\$312 Y, \$319 W
E	13-142-5.5	1) 5.5m SQ & 10)	.02ct - 2.40 dwt	\$300 Y, \$307 W
E	13-142-6.5	1) 6.5m SQ & 8)	.025ct - 2.89 dwt	\$365 Y, \$373 W
F	13-024-100	1) 1ct & 44)	.01ct - 3.05 dwt	\$355 Y, \$362 W
G	13-155-075	1) .75 & 8)	.02ct - 3.28 dwt	\$403 Y, \$410 W
H	13-161-025	1) .25 & 16)	.005ct - 1.70 dwt	\$238 Y, \$245 W
I	13-045-150	1) 1ct & 4)	.08ct - 2.17 dwt	\$270 Y, \$277 W
J	13-048-150	1) 1.50 & 54)	.01ct - 2.51 dwt	\$306 Y, \$314 W
K	13-127-050	1) .50, 16) .01 & 18)	.005ct - 2.80 dwt Avg	\$265 Y, \$272 W
K	13-127-075	1) .75, 16) .01 & 10)	.005ct - 2.80 dwt Avg	\$262 Y, \$269 W
K	13-127-100	1) 1ct, 14) .015 & 10)	.01ct - 2.80 dwt Avg	\$334 Y, \$341 W
K	13-127-150	1) 1.50, 14) .015 & 10)	.01ct - 2.80 dwt Avg	\$420 Y, \$426 W
K	13-127-200	1) 2ct, 14) .015 & 10)	.01ct - 2.80 dwt Avg	\$456 Y, \$463 W

Matching Band

13-153-075WR	39) .01ct - 3.10 dwt	\$364 Y, \$371 W
13-153-100WR	39) .01ct - 3.10 dwt	\$369 Y, \$376 W
19-244-130WR	11) .03ct - 3.09 dwt	\$371 Y, \$378 W
13-131-050WR	32) .01ct - 3.19 dwt	\$452 Y, \$459 W
13-131-100WR	32) .01ct - 4.20 dwt	\$473 Y, \$480 W
13-132-050WR	18) .015 & 30) .01ct - 2.76 dwt	\$334 Y, \$341 W
13-142-5.5WR	8) .02ct - 2.12 dwt	\$268 Y, \$275 W
13-142-6.5WR	12) .01ct - 2.28 dwt	\$279 Y, \$286 W
13-024-100WR	32) .01ct - 1.73 dwt	\$217 Y, \$224 W
13-155-075WR	2.71 dwt	\$323 Y, \$330 W
13-161-025WR	18) .005ct - 1.20 dwt	\$176 Y, \$184 W
13-045-150WR	7) .02 & 2) .01ct - 1.91 dwt	\$246 Y, \$253 W
13-048-150WR	63) .01ct - 1.99 dwt	\$251 Y, \$258 W
13-127-050WR	19) .01ct - 1.39 dwt	\$173 Y, \$181 W
13-127-075WR	19) .01ct - 1.30 dwt	\$186 Y, \$193 W
13-127-100WR	17) .015ct - 1.37 dwt	\$186 Y, \$193 W
13-127-150WR	17) .015ct - 1.63 dwt	\$220 Y, \$227 W
13-127-200WR	17) .015ct - 1.62 dwt	\$208 Y, \$215 W

Bridal Sets

ALL WEIGHTS ARE APPROXIMATE



A 13-042
14k Y/W
Round



B 13-156
14k Y/W
Round



C 13-159
14k Y/W
Oval/Round



D 13-158
14k Y/W
Cushion/Round



E 13-157
14k Y/W
Square/Round



F 13-039
14k Y/W
Square/Round



G 13-140-6
14k Y/W
Square



H 13-164
14k Y/W
Round/Trillion



I 13-065
14k Y/W
Marquise/Round

ALL WEIGHTS ARE APPROXIMATE

Bridal Sets

Mountings

A 13-042-075	1) .50 & 10) .02ct - 1.73 dwt	\$214 Y, \$221 W
A 13-042-100	1) .75 & 10) .03ct - 2.43 dwt	\$285 Y, \$293 W
A 13-042-130	1) 1ct & 10) .03ct - 2.59 dwt	\$283 Y, \$290 W
B 13-156-050	1) .50 & 40) .01ct - 2.22 dwt	\$287 Y, \$294 W
B 13-156-100	1) 1ct & 48) .01ct - 2.34 dwt	\$281 Y, \$288 W
B 13-156-150	1) 1.50 & 48) .01ct - 2.46 dwt	\$312 Y, \$319 W
C 13-159-8x6	1) 8x6 OV & 48) .01ct - 2.53 dwt	\$302 Y, \$309 W
D 13-158-5	1) 5m Cush & 40) .01ct - 2.27 dwt	\$281 Y, \$288 W
D 13-158-6	1) 6m Cush & 48) .01ct - 2.55 dwt	\$307 Y, \$314 W
E 13-157-5	1) 5m SQ & 48) .01ct - 2.40 dwt	\$302 Y, \$309 W
E 13-157-5.5	1) 5.5m SQ & 52) .01ct - 2.46 dwt	\$311 Y, \$319 W
E 13-157-6	1) 6m SQ & 52) .01ct - 2.59 dwt	\$307 Y, \$314 W
F 13-039-4	1) 4m SQ & 12) .02ct - 2.02 dwt	\$228 Y, \$236 W
F 13-039-5	1) 5m SQ & 12) .02ct - 2.02 dwt	\$285 Y, \$293 W
G 13-140-6	1) 6m, 2) 3m & 4) 2.5m SQ - 4.63 dwt	\$544 Y, \$551 W
H 13-164-050	1) .50ct & 2) 3m Trillion - 2.88 dwt	\$382 Y, \$389 W
I 13-065-025	1) 6x3 MQ & 8) .02ct - 2.64 dwt	\$340 Y, \$348 W

Matching Band

13-042-075WR	12) .02ct - 1.66 dwt	\$217 Y, \$225 W
13-042-100WR	14) .02ct - 2.05 dwt	\$243 Y, \$250 W
13-042-130WR	12) .03ct - 2.05 dwt	\$244 Y, \$252 W
13-156WR	28) .01ct - 1.32 dwt	\$186 Y, \$193 W
13-156WR	28) .01ct - 1.32 dwt	\$186 Y, \$193 W
13-156WR	28) .01ct - 1.32 dwt	\$186 Y, \$193 W
13-159-8x6WR	28) .01ct - 1.71 dwt	\$218 Y, \$226 W
13-158-5WR	28) .01ct - 1.60 dwt	\$203 Y, \$210 W
13-158-6WR	28) .01ct - 1.63 dwt	\$213 Y, \$221 W
13-157-5WR	28) .01ct - 1.62 dwt	\$208 Y, \$215 W
13-157-5.5WR	28) .01ct - 1.75 dwt	\$208 Y, \$216 W
13-157-6WR	28) .01ct - 1.74 dwt	\$218 Y, \$226 W
13-039-4WR	16) .02ct - 1.75 dwt	\$175 Y, \$182 W
13-039-5WR	14) .02ct - 1.75 dwt	\$224 Y, \$231 W
13-140-6WR	1) 3m, 2) 2.75m & 4) 2.5m SQ -3.88 dwt	\$458 Y, \$465 W
13-164-050WR	2.09 dwt	\$228 Y, \$235 W
13-065-025WR	1.71 dwt	\$211 Y, \$218 W



A 11-654
14k Y/W
Round



B 11-675 14k Y/W
Round



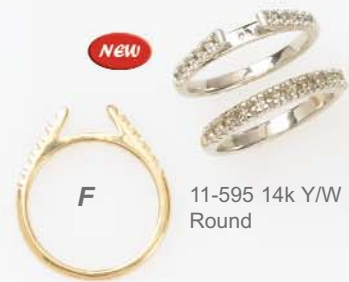
C 11-591, 11-592
11-593 14k Y/W
Round



D 11-643
14k Y/W
Round



E 11-594 14k Y/W
Round



F 11-595 14k Y/W
Round



G 11-588
14k Y/W
Round



H 11-651 14k Y/W
Round



11-602, 11-604
11-605, 11-606, 11-608
14k Y/W
A11-605 Plat
Round

Bridal Sets

ALL WEIGHTS ARE APPROXIMATE

Mountings

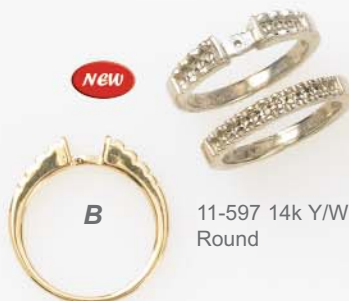
A	11-654	24) .03ct - 3.53 dwt	\$432 Y, \$439 W
B	11-675	56) .01 & 18) .005ct - 2.73 dwt	\$301 Y, \$308 W
C	11-591	12) .015ct - 2.31 dwt	\$284 Y, \$291 W
C	11-592	8) .03ct - 2.78 dwt	\$338 Y, \$345 W
C	11-593	8) .045ct - 3.05 dwt	\$369 Y, \$376 W
D	11-643	8) .10ct - 4.52 dwt	\$506 Y, \$519 W
E	11-594	30) .015ct - 2.77 dwt	\$340 Y, \$347 W
F	11-595	10) .02ct - 1.84 dwt	\$237 Y, \$253 W
G	11-588	2ea) .04, .03, .02ct, 3.00 dwt	\$347 Y, \$364 W
H	11-651	8) .05ct - 4.32 dwt	\$481 Y, \$488 W
I	11-602	6) .02-.03ct - 1.01 dwt	\$174 Y, \$181 W
I	11-604	6) .04-.05ct - 1.72 dwt	\$227 Y, \$234 W
I	11-605	6) .05-.07 - 1.62 dwt	\$258 Y, \$265 W
I	11-606	6) .06-.08ct - 1.81 dwt	\$249 Y, \$256 W
I	11-608	6) .08-.10ct - 2.25 dwt	\$274 Y, \$291 W

Matching Band

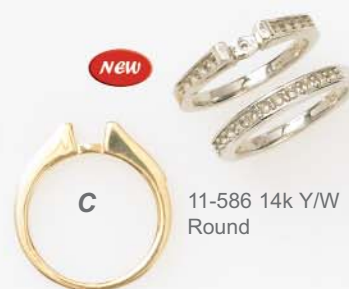
11-654WR	11) .03ct - 2.07 dwt	\$254 Y, \$261 W
11-675WR	62) .01ct - 2.24 dwt	\$301 Y, \$308 W
11-591WR	14) .015ct - 2.34 dwt	\$280 Y, \$287 W
11-592WR	11) .03ct - 2.55 dwt	\$304 Y, \$311 W
11-593WR	10) .045ct - 2.81 dwt	\$348 Y, \$355 W
11-643WR	10) .10ct - 4.52 dwt	\$508 Y, \$515 W
11-594WR	31) .015ct - 2.69 dwt	\$315 Y, \$323 W
11-595WR	11) .02ct - 2.03 dwt	\$257 Y, \$264 W
11-588WR	2ea) .04, .03, .02 & 1) .05ct - 2.60 dwt	\$338 Y, \$345 W
11-651WR	12) .05ct - 4.08 dwt	\$453 Y, \$460 W
11-602WR	7) .03ct - 1.72 dwt	\$177 Y, \$184 W
11-604WR	6) .04-.05ct - 1.68 dwt	\$217 Y, \$224 W
11-605WR	7) .07ct - 1.68 dwt	\$268 Y, \$275 W
11-606WR	6) .08ct - 1.72 dwt	\$252 Y, \$260 W
11-608WR	6) .10ct - 2.15 dwt	\$276 Y, \$283 W



A 11- 589
14k Y/W
Round



B 11-597 14k Y/W
Round



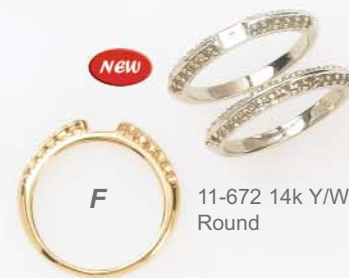
C 11-586 14k Y/W
Round



D 11- 585
14k Y/W
Round



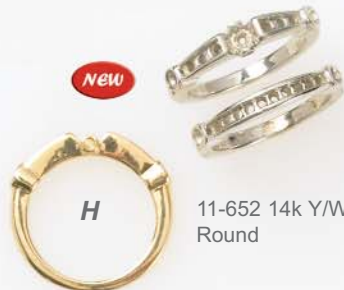
E 11-596 14k Y/W
Round



F 11-672 14k Y/W
Round



G 11-590 14k Y/W
Round



H 11-652 14k Y/W
Round



I 4-4786 14k Y/W
A4-4786 Plat
Round

Southeastern
Findings, Mountings, Tools and Wedding Bands

Bridal Sets

Mountings

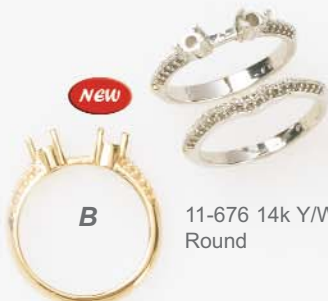
A	11-589	2) .015 & 6) .027ct - 2.70 dwt	\$345 Y, \$352 W
B	11-597	2ea) .05, .02 & 4) .03ct - 2.29 dwt	\$281 Y, \$289 W
C	11-586	8) .025ct - 2.20 dwt	\$276 Y, \$283 W
D	11-585	10) .015ct - 1.93 dwt	\$245 Y, \$252 W
E	11-596	12) .03ct - 1.70 dwt	\$219 Y, \$226 W
F	11-672	24) .015ct - 1.59 dwt	\$224 Y, \$231 W
G	11-590	10) .03ct - 3.10 dwt	\$374 Y, \$381 W
H	11-652	2ea) .07, .035, .025 & 4) .02ct - 2.80 dwt	\$349 Y, \$356 W
I	4-4786	12) .02ct - 2.82 dwt	\$308 Y, \$315 W

Matching Band

11-589WR	9) .027ct - 3.00 dwt	\$350 Y, \$357 W
11-597WR	12) .02ct - 2.14 dwt	\$269 Y, \$276 W
11-586WR	11) .025ct - 2.16 dwt	\$269 Y, \$276 W
11-585WR	14) .015ct - 1.75 dwt	\$221 Y, \$228 W
11-596WR	14) .03ct - 1.70 dwt	\$234 Y, \$241 W
11-672WR	30) .015ct - 1.73 dwt	\$224 Y, \$231 W
11-590WR	12) .03ct - 3.20 dwt	\$389 Y, \$396 W
11-652WR	2) .07 & 10) .02ct - 2.44 dwt	\$291 Y, \$298 W
4-4786WR	13) .02ct - 2.65 dwt	\$322 Y, \$329 W



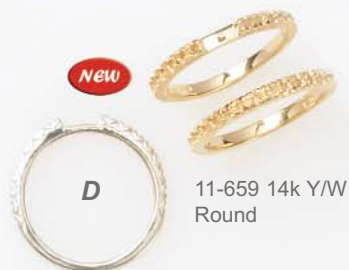
A 11-126 14k Y/W Round



B 11-676 14k Y/W Round



C 11-680, 11-681
11-682, 11-683
14k Y/W Round



D 11-659 14k Y/W Round



E 11-506 14k Y/W Round



F 11-509 14k Y/W Round



G 11-508 & 11-510
14k Y/W Round



H 11-644 & 11-645
14k Y/W Round



I 11-630 14k Y/W Round

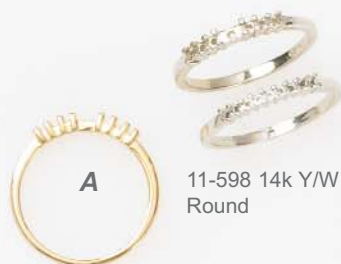
Bridal Sets

Mountings

A	11-126	2) .25 & 6) .01ct - 2.01 dwt	\$293 Y, \$300 W
B	11-676	2) .12 & 40) .0075ct - 1.70 dwt	\$235 Y, \$242 W
C	11-680	14) .01ct - 1.63 dwt	\$211 Y, \$218 W
C	11-681	12) .02ct - 2.25 dwt	\$275 Y, \$282 W
C	11-682	10) .03ct - 2.53 dwt	\$302 Y, \$309 W
C	11-683	8) .05ct - 3.07 dwt	\$369 Y, \$376 W
D	11-659	16) .02ct - 1.51 dwt	\$230 Y, \$237 W
E	11-506	12) .02ct - 3.08 dwt	\$372 Y, \$379 W
F	11-509	6ea) .05, .04, .03ct - 3.26 dwt	\$488 Y, \$495 W
G	11-508	4) .25ct - 2.80 dwt	\$349 Y, \$356 W
G	11-510	4) .15ct - 2.20 dwt	\$281 Y, \$288 W
H	11-644	6) .05ct - 2.29 dwt	\$288 Y, \$295 W
H	11-645	6) .10ct - 2.44 dwt	\$303 Y, \$311 W
I	11-630	18) .01ct - 1.50 dwt	\$219 Y, \$226 W

Matching Band

11-126WR	15) .01ct - 2.72 dwt	\$348 Y, \$355 W
11-676WR	40) .0075ct - 1.63 dwt	\$225 Y, \$232 W
11-680WR	18) .01ct - 1.68 dwt	\$224 Y, \$231 W
11-681WR	15) .02ct - 1.79 dwt	\$235 Y, \$242 W
11-682WR	12) .03ct - 2.29 dwt	\$271 Y, \$278 W
11-683WR	10) .05ct - 2.35 dwt	\$297 Y, \$304 W
11-659WR	18) .02ct - 1.62 dwt	\$240 Y, \$248 W
11-506WR	8) .02ct - 1.69 dwt	\$229 Y, \$236 W
11-509WR	2ea) .05, .04, .03ct - 1.62 dwt	\$274 Y, \$282 W
11-508WR	5) .25ct - 2.80 dwt	\$358 Y, \$366 W
11-510WR	5) .15ct - 2.30 dwt	\$281 Y, \$289 W
11-644WR	7) .05ct - 2.28 dwt	\$278 Y, \$286 W
11-645WR	7) .10ct - 2.84 dwt	\$315 Y, \$322 W
11-630WR	11) .01ct - 1.30 dwt	\$183 Y, \$190 W



A 11-598 14k Y/W Round



B 11-627 14k W or TT Square



C 11-646 14k Y/W Square/Round



D 11-658 14k Y/W Square



E 11-649 14k Y/W Square



F 11-657 14k Y/W Square



G 11-673 14k Y/W Square



H 11-653 14k Y/W Square



I 11-679 14k Y/W Square/Round

Southeastern

Findings, Mountings, Tools and Wedding Bands

ALL WEIGHTS ARE APPROXIMATE

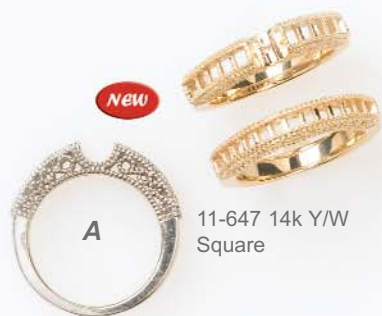
Bridal Sets

Mountings

A 11-598	6) .02ct - 1.09 dwt	\$156 Y, \$163 W
B 11-627	4) 3m SQ - 2.40 dwt	\$353 TT, \$336 W
C 11-646	10) 2m SQ & 24) .01ct - 3.17 dwt	\$389 Y, \$396 W
D 11-658	8) 2.75m SQ - 3.64 dwt	\$433 Y, \$444 W
E 11-649	10) 1.5m SQ - 2.69 dwt	\$354 Y, \$362 W
F 11-657	12) 2m SQ - 3.03 dwt	\$348 Y, \$356 W
G 11-673	12) 1.5m SQ - 2.07 dwt	\$273 Y, \$280 W
H 11-653	10) 2m SQ - 3.05 dwt	\$416 Y, \$423 W
I 11-679	12) 1.5m SQ, 21) .04 & 4) .005ct - 3.57 dwt	\$409 Y, \$417 W

Matching Band

11-598WR	9) .01ct - 0.93 dwt	\$142 Y, \$150 W
11-627WR	5) 3m SQ - 2.60 dwt	\$328 TT, \$324 W
11-646WR	12) 2m SQ & 30) .01ct - 3.05 dwt	\$349 Y, \$356 W
11-658WR	10) 2.75m SQ - 3.75 dwt	\$440 Y, \$445 W
11-649WR	14) 1.5m SQ - 2.70 dwt	\$366 Y, \$373 W
11-657WR	14) 2m SQ - 3.13 dwt	\$359 Y, \$367 W
11-673WR	14) 1.5m SQ - 2.11 dwt	\$273 Y, \$280 W
11-653WR	14) 2m SQ - 3.10 dwt	\$409 Y, \$416 W
11-679WR	14) 1.5m SQ & 30) .01ct - 2.75 dwt	\$341 Y, \$348 W



A **NEW**
11-647 14k Y/W
Square



B **NEW**
11-667 14k Y/W
Square



C **NEW**
11-677 14k Y/W
Square/Round



D **NEW**
11-678 14k Y/W
Baguette/Round



E **NEW**
11-668 14k Y/W
Baguette/Round



F
11-538 14k Y/W
Baguette/Round



G
11-410 14k Y/W
Baguette



H **NEW**
11-423 14k Y/W
Baguette/Round



I
11-417
14k W or TT
Baguette

Bridal Sets

ALL WEIGHTS ARE APPROXIMATE



Findings, Mountings, Tools and Wedding Bands

Mountings

Matching Band

A 11-647	10) 2.5m SQ - 3.68 dwt	\$435 Y, \$442 W	11-647WR	13) 2.2m SQ - 3.26 dwt	\$391 Y, \$399 W
B 11-667	2) 3m & 8) 2m SQ - 2.63 dwt	\$324 Y, \$331 W	11-667WR	3) 3m & 8) 2m SQ - 2.74 dwt	\$326 Y, \$333 W
C 11-677	2) 3m & 8) 2.5m SQ, 20) .01ct- 3.05 dwt	\$370 Y, \$377 W	11-677WR	14) 2m SQ & 28) .01ct - 2.82 dwt	\$351 Y, \$363 W
D 11-678	4) 3x2x1.5 TB & 31) .01ct - 2.67 dwt	\$343 Y, \$350 W	11-678WR	10) 1.5m SQ & 42) .01ct - 2.72 dwt	\$331 Y, \$338 W
E 11-668	2) 4x2 SB & 2) .03ct - 3.21 dwt	\$384 Y, \$391 W	11-668WR	2) 4x2 SB & 4) .03ct - 2.96 dwt	\$355 Y, \$362 W
F 11-538	2) 3x1.75 SB & 2) .04ct - 2.46 dwt	\$298 Y, \$305 W	11-538WR	3) 3x1.75 SB & 2) .04ct - 2.24 dwt	\$267 Y, \$274 W
G 11-410	4) 3.3x1.3 SB - 1.87 dwt	\$266 Y, \$273 W	11-410WR	2) 3.3x1.3 & 1) 4.5x2 SB - 1.27 dwt	\$195 Y, \$202 W
H 11-423	4) 4x2x1.5 TB & 2) .10ct - 3.40 dwt	\$431 Y, \$438 W	11-423WR	2) 5x2 SB, 4) 4x2x1.5 TB & 2) .10ct - 3.38 dwt	\$428 Y, \$435 W
I 11-417	4) 4x2x1.5 TB - 3.60 dwt	\$407 TT, \$414 W	11-417WR	1) 5x2 SB & 2) 4x2x1.5 TB - 2.25 dwt	\$282 TT, \$290 W



A 11-536 14k Y/W
Baguette/Round



C 11-524 14k Y/W



B V11-250 14k Y/W
AV11-250 Plat
Round
18k by Spec Order



D 11-702 14k Y/W
Marquise

Mountings

A 11-536	2) 3x2 SB & 4) .05ct - 2.70 dwt	\$326 Y, \$333 W
B V11-250	2ea) .10, .08, .055 & .035 - 3.51 dwt	\$424 Y, \$432 W
C 11-524	2.77 dwt	\$410 Y, \$417 W
D 11-702	2ea) 3x1.5, 4x2 & 4.5x2.5 MQ - 2.01 dwt	\$324 Y, \$332 W

Matching Band

11-536WR	3) 3x2 SB & 4) .05ct - 2.50 dwt	\$302 Y, \$309 W
V11-250WR	Victorian 2.75 dwt	\$344 Y, \$351 W
11-524WR	2.26 dwt	\$331 Y, \$339 W
11-702WR	1.08 dwt	\$340 Y, \$347 W

ALL WEIGHTS ARE APPROXIMATE

Three Stone Bridal Sets

19-29WR 14k Y/W/TT
19-29 14k Y/W/TT
V19-29WR 14k Y/W



A

19-30AWR 14k Y/W/TT
19-30 14k W/TT
19-30BWR 14k Y/W/TT



B

19-31 14kW or TT
19-31WR 14k Y/W/TT



C

19-32AWR 14k Y/W
19-32 14k W/TT
19-32WR 14k Y/W/TT
V19-32WR 14k Y/W



D

Mountings

A 19-29	1) .38 & 2) .18ct - 2.34 dwt	\$265 Y \$272 W, \$274 TT
B 19-30	1) .50 & 2) .25ct - 2.05 dwt	\$290 TT \$297 W
C 19-31	1) .75 & 2) .37ct - 2.37 dwt	\$308 TT \$315 W
D 19-32	1) 1ct & 2) .50ct - 2.53 dwt	\$326 TT \$334 W

Matching Band

19-29WR	5) .06ct - 2.00 dwt	\$268 Y, \$275 W, \$277 TT
V19-29WR	Victorian - 2.15 dwt	\$267 Y, \$274 W
19-30AWR	6) .03ct - 2.24 dwt	\$294 Y, \$301 W, \$315 TT
19-30BWR	7) .03ct - 2.31 dwt	\$289 Y, \$297 W, \$347 TT
19-31WR	6) .06ct - 2.47 dwt	\$289 Y, \$296 W, \$323 TT
19-32AWR	5) .12ct - 2.16 dwt	\$303 Y, \$310 W
19-32WR	8) .03ct - 2.27 dwt	\$308 Y, \$315 W, \$355 TT
V19-32WR	Victorian - 2.05 dwt	\$299 Y, \$306 W



A V18-60 14k Y/W Round



B V18-51 14k Y/W Round



C V18-50 14k Y/W/TT AV18-50 Plat Shank Only SHV18-50 Round 18k by Spec Order



D 11-504 14kW or TT Round



E 11-427 14k Y/W Baguette



F 11-420 14k Y/W Baguette



G 11-403, 11-404 11-405, 11-406 14k Y/W/TT Baguette See page 26 for Plat

Stones NOT Included



H 11-441, 11-442, 11-443, 11-444, 11-445 14k Y/W Baguette See page 26 for Plat

Bridal Sets

Mountings

A	V18-60	1) 1ct & 2) .25ct - 3.53 dwt	\$404 Y, \$411 W
B	V18-51	1) 1.25 & 2) .40ct - 2.87 dwt	\$331 Y, \$339 W
C	V18-50	1) 1ct & 2) .25ct - 2.62 dwt	\$332 Y, \$339 W
D	11-504	2) .25ct - 2.90 dwt	\$398 TT, \$377 W
E	11-427	2) 3.5x2 SB - 1.97 dwt	\$261 Y, \$268 W
F	11-420	2) 3x2x1.5 TB - 1.80 dwt	\$230 Y, \$237 W
G	11-403	2) 3x2x1.5 TB - 1.26 dwt	\$222 Y, \$229 W
G	11-404	2) 4x2x1.5 TB - 1.34 dwt	\$239 Y, \$246 W
G	11-405	2) 4.5x2.5x1.75 TB - 1.42 dwt	\$186 Y, \$193 W
G	11-406	2) 5x3x2 TB - 1.78 dwt	\$248 Y, \$255 W
H	11-441	2) 3.5x1.75x1.25 TB - 2.03 dwt	\$267 Y, \$274 W
H	11-442	2) 3.5x2x1.5 TB - 1.79 dwt	\$258 Y, \$265 W
H	11-443	2) 4x2x1.2 TB - 1.99 dwt	\$257 Y, \$264 W
H	11-444	2) 4.5x2.5x1.5 TB - 2.15 dwt	\$273 Y, \$280 W
H	11-445	2) 5.5x2.5x1.75 TB - 2.24 dwt	\$300 Y, \$307 W

Matching Band

V18-60WR	2.30 dwt	\$267 Y, \$274 W
V18-51WR	2.10 dwt	\$256 Y, \$263 W
V18-50WR	2.90 dwt	\$259 Y, \$266 W
11-504WR	3) .25ct - 3.00 dwt	\$398 TT, \$377 W
11-427WR	3) 3.5x2.5 SB - 1.78 dwt	\$257 Y, \$264 W
11-420WR	1) 5x2 SB & 2) 3x2x1.5 TB - 1.50 dwt	\$211 Y, \$218 W
11-403WR	2) 3x2x1.5 TB - 1.72 dwt	\$241 Y, \$248 W
11-404WR	2) 4x2x1.5 TB - 1.63 dwt	\$213 Y, \$220 W
11-405WR	2) 4.5x2.5x1.75 TB - 1.90 dwt	\$249 Y, \$256 W
11-406WR	2) 5x3x2 TB - 1.76 dwt	\$240 Y, \$247 W
11-441WR	1) 3.3x1.75 SB & 2) 3.5x1.75x1.25 TB - 1.60 dwt	\$226 Y, \$233 W
11-442WR	1) 3.7x2 SB & 2) 3.5x2x1.5 TB - 1.58 dwt	\$204 Y, \$211 W
11-443WR	1) 4x2 SB & 2) 4x2x1.2 TB - 1.70 dwt	\$227 Y, \$234 W
11-444WR	1) 4x2.5 SB & 2) 4.5x2.5x1.5 TB - 1.89 dwt	\$224 Y, \$231 W
11-445WR	1) 4.5x2.5 SB & 2) 5.5x2.5x1.75 TB - 1.95 dwt	\$282 Y, \$289 W

ALL WEIGHTS ARE APPROXIMATE

ALL WEIGHTS ARE APPROXIMATE

Bridal Sets

MOUNTINGS

MOUNTINGS



Stones NOT Included



A



Stones NOT Included



B



11-203, 11-204, 11-205
14k Y/W/TT
Triangle
See page 26 for Plat

V11-950
AV11-950 Plat
Trillion
18k by Spec Order

V11-100 14k Y/W
V11-140 14k Y/W
AV11-100 Plat
AV11-140 Plat
Round



C

V11-600 14k Y/W
AV11-600 Plat
Square/Princess
18k by Spec Order



D



11-616 Square
Shank Only SH11-616



E



F

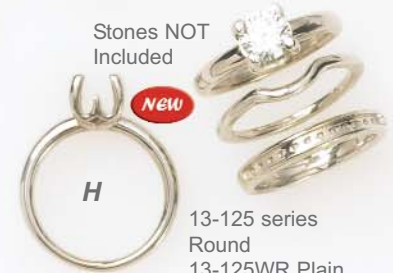
V11-400 14k Y/W
AV11-400 Plat
Tapered Baguette
18k by Spec Order



G



V11-300 14k Y/W
AV11-300 Plat
Pear Shape
18k by Spec Order



Stones NOT Included

NEW

H

13-125 series
Round
13-125WR Plain
13-125AWR
with stones

Southeastern

Findings, Mountings, Tools and Wedding Bands

Bridal Sets

Mountings

A	V11-950	2) 4.5m Trillion - 3.18 dwt	\$407 Y, \$415 W
B	11-203	2) 4m Tri - 2.03 dwt	\$261 Y, \$268 W, \$276 TT
B	11-204	2) 5m Tri - 2.26 dwt	\$287 Y, \$294 W, \$301 TT
B	11-205	2) 6m Tri - 2.25 dwt	\$279 Y, \$286 W, \$365 TT
C	V11-600	2) 3.3m SQ - 2.90 dwt	\$393 Y, \$400 W
D	11-616	2) 3.25m SQ - 2.72 dwt	\$319 Y, \$326 W
E	V11-100	2) .25ct - 3.02 dwt	\$444 Y, \$451 W
E	V11-140	2) .40ct - 3.64 dwt	\$428 Y, \$435 W
F	V11-400	2) 5x2.7x1.8 TB - 2.43 dwt	\$299 Y, \$306 W
G	V11-300	2) 5x3.25 PS - 2.78 dwt	\$342 Y, \$350 W
H	13-125-050	1) .50ct - Avg Wt 3.05 dwt	\$283 Y, \$290 W
H	13-125-075	1) .75ct - Avg Wt 3.05 dwt	\$334 Y, \$341 W
H	13-125-100	1) 1ct - Avg Wt 3.05 dwt	\$359 Y, \$366 W
H	13-125-125	1) 1.25ct - Avg Wt 3.05 dwt	\$399 Y, \$406 W
H	13-125-150	1) 1.50ct - Avg Wt 3.05 dwt	\$427 Y, \$435 W
H	13-125-200	1) 2ct - Avg Wt 3.05 dwt	\$514 Y, \$521 W
H	13-125-250	1) 2.50ct - Avg Wt 3.05 dwt	\$554 Y, \$562 W
H	13-125-300	1) 3ct - Avg Wt 3.05 dwt	\$606 Y, \$613 W

Matching Band

V11-950WR	2.73 dwt	\$346 Y, \$354 W
11-203WR	1.42 dwt	\$235 Y, \$242 W
11-204WR	1.65 dwt	\$248 Y, \$255 W
11-205WR	1.41 dwt	\$275 Y, \$282 W
V11-600WR	2.13 dwt	\$276 Y, \$283 W
11-616WR	2.10 dwt	\$283 Y, \$290 W
V11-100WR	Fits V11-100 & V11-140 - 2.65 dwt	\$402 Y, \$409 W
V11-100WR	Fits V11-100 & V11-140 - 2.65 dwt	\$402 Y, \$409 W
V11-400WR	3.08 dwt	\$394 Y, \$402 W
V11-300WR	2.84 dwt	\$310 Y, \$317 W
13-125WR	Fits all 13-125 - 1.41 dwt	\$179 Y, \$187 W
13-125AWR	Fits all 13-125, holds 13) .03ct 2.04 dwt	\$259 Y, \$266 W



Stones NOT Included



A



13B360-4
13B360-5
Square/Princess

NEW



B



13-092 series
Emerald Cut



C



13-022 series
Round



Stones NOT Included



D



V13-900 14k Y/W
AV13-900 Plat
Round
18k by Spec Order



E



13-031 series 14k Y/W
Round

V11-900 14k Y/W
AV11-900 Plat
18k by Spec Order



F

ALL WEIGHTS ARE APPROXIMATE

Bridal Sets

Mountings

Matching Band

A	13B360-4	4m SQ - 3.33 dwt	\$378 Y, \$385 W
A	13B360-5	5m SQ - 4.39 dwt	\$494 Y, \$501 W
B	13-092-6x4	6x4m EC - 1.43 dwt	\$213 Y, \$220 W
B	13-092-7x5	7x5m EC - 1.90 dwt	\$238 Y, \$245 W
B	13-092-8x6	8x6m EC - 1.98 dwt	\$287 Y, \$294 W
B	13-092-9x7	9x7m EC - 2.10 dwt	\$279 Y, \$286 W
C	13-022-050	.50ct - 2.51 dwt	\$320 Y, \$326 W
C	13-022-075	.75ct - 2.69 dwt	\$355 Y, \$362 W
C	13-022-100	1ct - 2.97 dwt	\$365 Y, \$373 W
D	V13-900-050	.50ct - 3.73 dwt	\$407 Y, \$415 W
D	V13-900-100	1ct - 2.88 dwt	\$370 Y, \$377 W
D	V13-900-150	1.50ct - 3.55 dwt	\$438 Y, \$445 W
D	V13-900-200	2ct - 3.74 dwt	\$431 Y, \$438 W
E	13-031-016	.16ct - 1.19 dwt	\$183 Y, \$190 W
E	13-031-033	.33ct - 1.46 dwt	\$184 Y, \$191 W
E	13-031-050	.50ct - 1.50 dwt	\$185 Y, \$192 W
E	13-031-075	.75ct - 1.70 dwt	\$193 Y, \$200 W
E	13-031-100	1ct - 1.70 dwt	\$201 Y, \$208 W
F	V11-900	Plain 2.45 dwt	\$298 Y, \$306 W

13B360-4WR	2.94 dwt	\$362 Y, \$383 W
13B360-5WR	2.95 dwt	\$373 Y, \$380 W
13-092-6x4WR	1.55 dwt	\$241 Y, \$248 W
13-092-7x5WR	1.72 dwt	\$240 Y, \$247 W
13-092-8x6WR	1.77 dwt	\$228 Y, \$235 W
13-092-9x7WR	1.74 dwt	\$217 Y, \$224 W
13-022-050WR	1.72 dwt	\$242 Y, \$249 W
13-022-075WR	1.80 dwt	\$242 Y, \$249 W
13-022-100WR	1.86 dwt	\$242 Y, \$249 W
V13-900-050WR	Fits 1/2 ct	\$287 Y, \$294 W
V13-900WR	Fits 1-2ct - 2.68 dwt	\$339 Y, \$346 W
V13-900WR	Fits 1-2ct - 2.68 dwt	\$339 Y, \$346 W
V13-900WR	Fits 1-2 ct - 2.68 dwt	\$339 Y, \$346 W
13-031WR	0.78 dwt	\$128 Y, \$135 W
13-031WR	0.78 dwt	\$128 Y, \$135 W
13-031WR	0.78 dwt	\$128 Y, \$135 W
13-031WR	0.78 dwt	\$128 Y, \$135 W
13-031WR	0.78 dwt	\$128 Y, \$135 W
13-031WR	0.78 dwt	\$128 Y, \$135 W
V11-900WR	2.50 dwt	\$306 Y, \$313 W