



**Southeastern**  
Findings, Mountings, Tools and Wedding Bands

*New Mountings for Rounds*

	<u>Order #</u>	<u>Available In</u>	<u>Description</u>	<u>Price</u>
A	<b>13-138-100</b>	14k Y/W	1) 1ct, 6) .03, 36) .01 & 56) .015ct - 5.45 dwt	\$600 Y, \$607 W
A	<b>13-138-200</b>	14k Y/W	1) 2ct, 2) .03, 10) .025 & 96) .01ct - 5.88 dwt	\$655 Y, \$663 W
B	<b>13-148-100</b>	14k Y/W	1) 1ct, 6) .03, 68) .01 & 24) .005ct - 5.21 dwt	\$634 Y, \$641 W
C	<b>13-146-100</b>	14k Y/W	1) 1ct & 96) .01ct - 3.78 dwt	\$461 Y, \$468 W
D	<b>13-145-100</b>	14k Y/W	1) 1ct & 102) .015ct - 3.60 dwt	\$451 Y, \$458 W
E	<b>13-147-150</b>	14k Y/W	1) 1.50ct & 50) .01ct - 4.84 dwt	\$544 Y, \$551 W
E	<b>13-147-200</b>	14k Y/W	1) 2ct & 52) .01ct - 5.05 dwt	\$579 Y, \$586 W
F	<b>13-144-075</b>	14k Y/W	1) .75, 2) .01 & 40) .005ct - 3.87 dwt	\$457 Y, \$465 W
F	<b>13-144-100</b>	14k Y/W	1) 1ct, 2) .01 & 40) .005ct - 3.92 dwt	\$458 Y, \$465 W
G	<b>13-139-100</b>	14k Y/W	1) 1ct, 4) .04, 2) .03 & 26) .01ct - 4.42 dwt	\$544 Y, \$551 W
H	<b>13-047-125</b>	14k Y/W	1) 1ct & 12) .02ct - 3.13 dwt	\$372 Y, \$379 W

ALL WEIGHTS ARE APPROXIMATE



13-137 Series

A



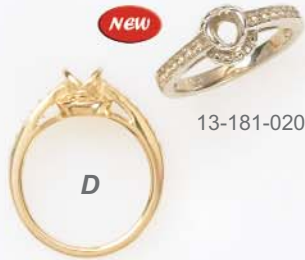
17-82-5

B



13-160-025

C



13-181-020

D



13-180-125

E



13-163-060

F



17-83  
17-84  
17-85

G



Stones NOT Included

18-332  
18-334  
18-336  
18-338  
18-340

H



16-47  
16-48

I

Rounds

	Order #	Available In	Description	Price
A	13-137-050	14k Y/W	1) .50, 48) .02 & 12) .005ct - 3.08 dwt	\$369 Y, \$376 W
A	13-137-075	14k Y/W	1) .75, 48) .02 & 15) .005ct - 3.15 dwt	\$365 Y, \$372 W
A	13-137-125	14k Y/W	1) 1.25, 48) .02 & 17) .005ct - 3.74 dwt	\$415 Y, \$422 W
B	17-82-5	14k Y/W	1) 5mm Rd, 48) .02 & 12) .005ct - 2.97 dwt	\$283 Y, \$290 W
C	13-160-025	14k Y/W	1) .25 & 12) .0075ct - 2.43 dwt	\$297 Y, \$304 W
D	13-181-020	14k Y/W	1) .20 & 12) .01ct - 2.52 dwt	\$303 Y, \$310 W
E	13-180-125	14k Y/W	1) 1.25, 8) .01 & 4) .005ct - 2.09 dwt	\$238 Y, \$245 W
F	13-163-060	14k Y/W	1) .60, 4) .01, 12) .02 & 40) .015ct - 4.21 dwt	\$529 Y, \$537 W
G	17-83	14k Y/W	1) 5mm Rd & 12) .015ct - 1.49 dwt	\$187 Y, \$194 W
G	17-84	14k Y/W	7) 7mm Rd & 12) .02ct - 1.73 dwt	\$229 Y, \$236 W
G	17-85	14k Y/W	1) 8mm Rd & 14) .01-.02ct - 1.88 dwt	\$270 Y, \$277 W
H	18-332	14k TT	1) 4mm Rd (.25ct) - 2.86 dwt	\$355 TT
H	18-334	14K TT	1) 5mm Rd (.50ct) - 3.64 dwt	\$485 TT
H	18-336	14k TT	1) 6mm Rd (.75ct) - 3.42 dwt	\$506 TT
H	18-338	14k TT	1) 6.5mm Rd (1ct) - 4.04 dwt	\$511 TT
H	18-340	14k TT	1) 8mm Rd (2ct) - 6.21 dwt	\$806 TT
I	16-47	14k Y/W	1) 12mm Rd - 2.29 dwt	\$282 Y, \$289 W
I	16-48	14k Y/W	1) 8mm Rd - 2.06 dwt	\$253 Y, \$260 W

ALL WEIGHTS ARE APPROXIMATE



## NEW Oval Mountings

Order #	Available In	Description	Price
A 17-62-6x4	14k Y/W	6x4 OV & 24) .015ct - 2.91 dwt	\$364 Y, \$371 W
A 17-62-7x5	14k Y/W	7x5 OV & 28) .015ct - 3.19 dwt	\$375 Y, \$382 W
A 17-62-8x6	14k Y/W	8x6 OV & 30) .015ct - 3.13 dwt	\$378 Y, \$385 W
B 17-68-6x4	14k Y/W	6x4 OV, 14) .015 & 10) .01ct - 2.35 dwt	\$297 Y, \$304 W
C 17-335-7x5	14k Y/W	7x5 OV & 14) .015ct - 3.81 dwt	\$447 Y, \$455 W
C 17-335-8x6	14k Y/W	8x6 OV & 16) .015ct - 3.85 dwt	\$458 Y, \$465 W
D 17-80-7x5	14k Y/W	7x5 OV, 44) .02 & 16) .005ct - 3.18 dwt	\$399 Y, \$406 W
D 17-80-8x6	14k Y/W	8x6 OV, 48) .02 & 18) .005ct - 3.95 dwt	\$432 Y, \$439 W
E 17-66-6x4	14k Y/W	6x4 OV & 12) .015ct - 2.33 dwt	\$303 Y, \$310 W
E 17-66-7x5	14k Y/W	7x5 OV & 12) .015ct - 2.71 dwt	\$334 Y, \$341 W
E 17-66-8x6	14K Y/W	8x6 OV & 12) .015ct - 2.94 dwt	\$349 Y, \$356 W

ALL WEIGHTS ARE APPROXIMATE

ALL WEIGHTS ARE APPROXIMATE

Ovals

MOUNTINGS



17-210



17-337



17-52



17-334



17-336



17-300



See Below

17-51 shown set  
Stones NOT Included



See Below

17-100 shown set  
Stones NOT Included

Ovals

	<u>Order #</u>	<u>Available In</u>	<u>Description</u>	<u>Price</u>
A	17-210	14k Y/W	6x4 OV & 4) 2x1.5x1 TB - 1.89 dwt	\$258 Y, \$265 W
B	17-337	14k Y/W	7x5 OV & 2ea) .02, .01ct - 2.41 dwt	\$356 Y, \$363 W
C	17-52	14k Y/W	10x8 OV & 12) .04-.05ct - 3.31 dwt	\$409 Y, \$416 W
D	17-334	14k Y/W	7x5 OV & 4ea) .032, .02, .01ct - 2.07 dwt	\$314 Y, \$322 W
E	17-336	14k Y/W	8x6 OV, 6) .04, 24) .005ct - 2.71 dwt	\$366 Y, \$373 W
F	17-300	14k Y/W	10x8 OV, 2) .015, 4) .01ct - 2.16 dwt	\$319 Y, \$326 W
G	17-51	14k Y/W	9x7 OV & 12) .03-.04ct - 1.99 dwt	\$286 Y, \$294 W
G	17-53	14k Y/W	10x8 OV & 8) .03-.04ct - 2.05 dwt	\$279 Y, \$287 W
G	17-54	14k Y/W	11x9 OV & 14) .03-.04ct - 2.33 dwt	\$325 Y, \$332 W
G	17-55	14k Y/W	12x10 OV & 14) .03-.04ct - 2.36 dwt	\$321 Y, \$328 W
G	17-57	14k Y/W	14x10 OV & 16) .03-.04ct - 2.41 dwt	\$314 Y, \$321 W
G	17-58	14K Y/W	14x12 OV & 16) .03-.04ct - 2.86 dwt	\$392 Y, \$399 W
H	17-100	14k Y/W	7x5 OV & 10) .05ct - 2.49 dwt	\$317 Y, \$324 W
H	17-101	14k Y/W	8x6 OV & 10) .07ct - 2.68 dwt	\$360 Y, \$367 W
H	17-102	14k Y/W	9x7 OV & 12) .08ct - 2.95 dwt	\$381 Y, \$388 W
H	17-103	14k Y/W	10x8 OV & 12) .10ct - 3.06 dwt	\$407 Y, \$415 W



17-302



17-331



17-212



17-204



See Below



17-122 shown set  
Stones NOT Included



See Below



17-202



17-200



17-14  
17-16  
17-17

	<u>Order #</u>	<u>Available In</u>	<u>Description</u>	<u>Price</u>
A	17-302	14k Y/W	10x8 OV & 2) .03ct - 2.96 dwt	\$353 Y, \$361 W
B	17-331	14k Y/W	9x7 OV, 4) .015 & 6) .01ct - 1.93 dwt	\$268 Y, \$276 W
C	17-212	14k Y/W	6x4 OV & 8) .015ct - 2.09 dwt	\$246 Y, \$253 W
D	17-204	14k Y/W	7x5 OV & 2) .06ct - 1.52 dwt	\$256 Y, \$264 W
E	17-121	14k Y/W	5x3 OV & 2) .04ct - 1.41 dwt	\$230 Y, \$242 W
E	17-122	14k Y/W	6x4 OV & 2) .04ct - 1.48 dwt	\$228 Y, \$235 W
E	17-123	14k Y/W	7x5 OV & 2) .04ct - 1.53 dwt	\$239 Y, \$247 W
E	17-124	14k Y/W	8x6 OV & 2) .04ct - 1.61 dwt	\$198 Y, \$205 W
E	17-125	14k Y/W	9x7 OV & 2) .04ct - 1.65 dwt	\$259 Y, \$266 W
E	17-126	14k Y/W	11x9 OV & 2) .05ct - 1.75 dwt	\$215 Y, \$222 W
E	17-127	14k Y/W	12x10 OV & 2) .06ct - 1.80 dwt	\$230 Y, \$237 W
F	17-161	14K Y/W	6x4 OV & 6) .02ct - 1.47 dwt	\$190 Y, \$197 W
F	17-162	14k Y/W	7x5 OV & 6) .02ct - 1.67 dwt	\$241 Y, \$248 W
F	17-163	14k Y/W	8x6 OV & 6) .04ct - 1.88 dwt	\$217 Y, \$224 W
F	17-164	14k Y/W	9x7 OV & 6) .04ct - 2.00 dwt	\$237 Y, \$245 W
F	17-165	14k Y/W	11x9 OV & 6) .04ct - 2.03 dwt	\$294 Y, \$301 W
F	17-166	14k Y/W	12x10 OV & 6) .04ct - 2.07 dwt	\$306 Y, \$313 W
G	17-202	14k Y/W	7x5 OV - 1.45 dwt	\$208 Y, \$215 W
H	17-200	14k Y/W	7x5 OV - 1.61 dwt	\$218 Y, \$225 W
I	17-17	14k Y/W	14x12 OV - 2.62 dwt	\$299 Y, \$306 W
I	17-16	14k Y/W	16x12 OV - 4.07 dwt	\$474 Y, \$481 W
I	17-14	14k Y/W	18x13 OV - 3.31 dwt	\$413 Y, \$420 W



ALL WEIGHTS ARE APPROXIMATE

Ovals

	Order #	Available In	Description	Price
A	17-26	14k Y/W	20x15 OV - 4.26 dwt	\$569 Y, \$576 W
A	17-27	14k Y/W	18x13 OV - 3.98 dwt	\$586 Y, \$593 W
B	17-117	14k Y/W	12x10 OV - 2.44 dwt	\$307 Y, \$314 W
B	17-118	14k Y/W	14x12 OV - 2.99 dwt	\$348 Y, \$355 W
B	17-119	14k Y/W	16x12 OV - 3.02 dwt	\$338 Y, \$346 W
C	17-49	14k Y/W	14x10 OV - 2.49 dwt	\$273 Y, \$280 W
D	17-30	14k Y/W	14x10 OV - 3.12 dwt	\$376 Y, \$383 W
E	17-22	14k Y/W	14x10 OV - 2.43 dwt	\$317 Y, \$324 W
F	17-41	14k Y/W	8x6 OV - 1.86 dwt	\$353 Y, \$360 W
F	17-40	14k Y/W	9x7 OV - 2.48 dwt	\$363 Y, \$370 W
F	17-39	14k Y/W	10x8 OV - 2.19 dwt	\$342 Y, \$349 W
F	17-38	14K Y/W	11x9 OV - 2.46 dwt	\$413 Y, \$420 W
F	17-37	14k Y/W	12x10 OV - 3.00 dwt	\$413 Y, \$420 W
G	17-151	14k Y/W	8x6 OV - 2.47 dwt	\$364 Y, \$371 W
G	17-152	14k Y/W	10x8 OV - 3.12 dwt	\$359 Y, \$366 W
H	17-48	14k Y/W	8x6 OV - 2.78 dwt	\$307 Y, \$314 W
I	17-21	14k Y/W	12x10 OV - 2.84 dwt	\$365 Y, \$373 W

	Order #	Available In	Description	Price
A	16-71	14k Y/W	6x4 OV - 0.96 dwt	\$149 Y, \$156 W
A	16-70	14k Y/W	7x5 OV - 1.00 dwt	\$158 Y, \$165 W
A	16-69	14k Y/W	8x6 OV - 1.08 dwt	\$175 Y, \$182 W
A	16-68	14k Y/W	9x7 OV - 1.17 dwt	\$183 Y, \$190 W
A	16-67	14k Y/W	10x8 OV - 1.57 dwt	\$206 Y, \$213 W
A	16-66	14k Y/W	11x9 OV - 1.50 dwt	\$216 Y, \$223 W
A	16-65	14k Y/W	12x10 OV - 1.89 dwt	\$224 Y, \$232 W
A	16-64	14k Y/W	14x10 OV - 1.72 dwt	\$258 Y, \$266 W
A	16-63	14k Y/W	14x12 OV - 1.90 dwt	\$258 Y, \$265 W
A	16-62	14k Y/W	16x12 OV - 2.13 dwt	\$283 Y, \$290 W
A	16-61	14k Y/W	18x13 OV - 2.28 dwt	\$289 Y, \$296 W



Stones NOT Included

B	16-15	14K Y/W	8x6 OV - 1.63 dwt	\$212 Y, \$219 W
B	16-14	14k Y/W	9x7 OV - 1.90 dwt	\$232 Y, \$239 W
B	16-13	14k Y/W	10x8 OV - 2.00 dwt	\$283 Y, \$291 W
B	16-12	14k Y/W	10x8 OV - 1.87 dwt	\$212 Y, \$220 W
B	16-11	14k Y/W	11x9 OV - 2.08 dwt	\$221 Y, \$228 W
B	16-10	14k Y/W	12x10 OV - 2.37 dwt	\$271 Y, \$278 W
B	16-9	14k Y/W	13x11 OV - 2.11 dwt	\$253 Y, \$261 W
B	16-8	14k Y/W	14x12 OV - 3.04 dwt	\$327 Y, \$334 W
B	16-7	14k Y/W	16x12 OV - 3.29 dwt	\$364 Y, \$371 W
B	16-6	14k Y/W	18x13 OV - 3.46 dwt	\$385 Y, \$392 W
B	16-5	14k Y/W	20x15 OV - 3.76 dwt	\$439 Y, \$446 W



ALL WEIGHTS ARE APPROXIMATE

C	17-12	14k Y/W	8x6 OV - 1.56 dwt	\$211 Y, \$218 W
C	17-11	14k Y/W	7x5 OV - 1.44 dwt	\$213 Y, \$220 W
C	17-10	14k Y/W	8x6 OV - 1.47 dwt	\$174 Y, \$181 W
C	17-9	14k Y/W	9x7 OV - 1.63 dwt	\$208 Y, \$216 W
C	17-8	14k Y/W	10x8 OV - 1.90 dwt	\$219 Y, \$226 W
C	17-7	14k Y/W	11x9 OV - 2.26 dwt	\$287 Y, \$294 W
C	17-6	14k Y/W	12x10 OV - 3.29 dwt	\$328 Y, \$336 W
C	17-5	14k Y/W	14x12 OV - 3.78 dwt	\$427 Y, \$434 W
C	17-4	14k Y/W	16x12 OV - 3.51 dwt	\$400 Y, \$407 W
C	17-3	14k Y/W	16x14 OV - 3.73 dwt	\$425 Y, \$432 W
C	17-2	14k Y/W	18x13 OV - 4.70 dwt	\$536 Y, \$543 W
C	17-1	14k Y/W	20x15 OV - 5.29 dwt	\$603 Y, \$610 W



Ovals

D	17-106	14k Y/W	5x3 OV - 1.49 dwt	\$184 Y, \$191 W
D	17-107	14k Y/W	6x4 OV - 1.56 dwt	\$192 Y, \$199 W
D	17-108	14k Y/W	7x5 OV - 1.96 dwt	\$226 Y, \$233 W
D	17-109	14k Y/W	8x6 OV - 1.91 dwt	\$236 Y, \$243 W
D	17-110	14k Y/W	9x7 OV - 2.56 dwt	\$300 Y, \$307 W
D	17-111	14k Y/W	10x8 OV - 3.52 dwt	\$392 Y, \$400 W
D	17-112	14k Y/W	12x10 OV - 3.21 dwt	\$360 Y, \$368 W
D	17-113	14k Y/W	14x10 OV - 5.20 dwt	\$537 Y, \$544 W
D	17-114	14k Y/W	16x12 OV - 7.52 dwt	\$726 Y, \$733 W



Stones NOT Included



See Below for Order Number



See Below for Order Number

Stones NOT Included

ALL WEIGHTS ARE APPROXIMATE



See Below for Order Number

Stones NOT Included



See Below for Order Number



See Below for Order Number

**Southeastern**  
Findings, Mountings, Tools and Wedding Bands

	Order #	Available In	Description	Price
A	17-169	14k Y/W	6x4 EC & 2) .01ct - 1.55 dwt	\$235 Y, \$242 W
A	17-170	14k Y/W	8x6 EC & 2) .015ct - 2.27 dwt	\$308 Y, \$315 W
A	17-171	14k Y/W	10x8 EC & 4) .015ct - 3.54 dwt	\$416 Y, \$423 W
B	17-65	14k Y/W	5x3 EC & 14) .01ct - 1.45 dwt	\$211 Y, \$219 W
B	17-67	14k Y/W	6x4 EC & 14) .01ct - 1.71 dwt	\$243 Y, \$251 W
B	17-69	14k Y/W	7x5 EC & 16) .01ct, 1.81 dwt	\$261 Y, \$268 W
B	17-71	14k Y/W	8x6 EC & 18) .01ct - 1.78 dwt	\$277 Y, \$284 W
B	17-72	14k Y/W	8x6 EC & 18) .02ct - 2.22 dwt	\$248 Y, \$255 W
B	17-75	14k Y/W	10x8 EC & 18) .03ct - 2.93 dwt	\$403 Y, \$411 W
B	17-76	14k Y/W	12x10 EC & 18) .04ct - 3.27 dwt	\$352 Y, \$359 W
C	17-172	14k Y/W	7x5 EC & 2) .03ct - 1.76 dwt	\$184 Y, \$191 W
C	17-174	14K Y/W	8x6 EC & 2) .05ct - 2.15 dwt	\$227 Y, \$234 W
C	17-176	14k Y/W	9x7 EC & 2) .05ct - 2.24 dwt	\$206 Y, \$213 W
C	17-178	14k Y/W	10x8 EC & 2) .04ct - 2.26 dwt	\$236 Y, \$243 W
D	17-182	14k Y/W	7x5 EC & 4) .03ct - 1.77 dwt	\$232 Y, \$239 W
D	17-184	14k Y/W	8x6 EC & 4) .03ct - 1.91 dwt	\$245 Y, \$252 W
D	17-186	14k Y/W	9x7 EC & 4) .04ct - 2.22 dwt	\$278 Y, \$285 W
D	17-188	14k Y/W	10x8 EC & 4) .04ct - 2.35 dwt	\$270 Y, \$277 W
E	17-192	14k Y/W	7x5 EC & 6) .03ct - 1.86 dwt	\$234 Y, \$240 W
E	17-194	14k Y/W	8x6 EC & 6) .03ct - 2.06 dwt	\$222 Y, \$229 W
E	17-196	14k Y/W	9x7 EC & 6) .04ct - 2.25 dwt	\$271 Y, \$278 W
E	17-198	14k Y/W	10x8 EC & 6) .04ct - 2.66 dwt	\$304 Y, \$311 W

MORE EMERALD CUT STYLES CONTINUED ON NEXT PAGE

*Emerald Cut*

MOUNTINGS



# Southeastern

Findings, Mountings, Tools and Wedding Bands



	<u>Order #</u>	<u>Available In</u>	<u>Description</u>	<u>Price</u>
A	17-189	14k Y/W	7x5 EC, 4ea) .03, .02, .01ct - 2.03 dwt	\$272 Y, \$279 W
B	17-73	14k Y/W	8.6x6.2 EC & 60) .01ct - 3.05 dwt	\$372 Y, \$379 W
C	16-89	14k Y/W	6x4 EC - 1.14 dwt	\$182 Y, \$189 W
C	16-88	14k Y/W	7x5 EC - 1.49 dwt	\$190 Y, \$197 W
C	16-87	14k Y/W	8x6 EC - 1.44 dwt	\$204 Y, \$211 W
C	16-86	14k Y/W	9x7 EC - 1.46 dwt	\$231 Y, \$238 W
C	16-85	14k Y/W	10x8 EC - 1.35 dwt	\$202 Y, \$209 W
C	16-84	14k Y/W	12x10 EC - 1.97 dwt	\$249 Y, \$256 W
C	16-83	14k Y/W	14x12 EC - 2.16 dwt	\$279 Y, \$286 W
C	16-82	14k Y/W	18x12 EC - 2.80 dwt	\$377 Y, \$384 W
D	16-42	14K Y/W	8x6 EC - 1.44 dwt	\$228 Y, \$235 W
D	16-41	14k Y/W	9x7 EC - 2.09 dwt	\$261 Y, \$269 W
D	16-35	14k Y/W	10x8 EC - 2.08 dwt	\$267 Y, \$274 W
D	16-34	14k Y/W	11x9 EC - 2.25 dwt	\$314 Y, \$321 W
D	16-27	14k Y/W	14x12 EC - 2.29 dwt	\$317 Y, \$324 W
D	16-33	14k Y/W	12x10 EC - 3.58 dwt	\$428 Y, \$435 W
D	16-32	14k Y/W	14x12 EC - 2.73 dwt	\$370 Y, \$377 W
D	16-28	14k Y/W	12X10 EC - 2.03 dwt	\$285 Y, \$292 W
D	16-24	14k Y/W	16x12 EC - 4.41 dwt	\$548 Y, \$555 W
E	16-23	14k Y/W	18x13 EC - 3.94 dwt	\$444 Y, \$451 W

ALL WEIGHTS ARE APPROXIMATE

# Square, Cushion & Pear Shape



Stones NOT Included



17-87-5  
17-87-6  
17-87-7



NEW

17-81-4  
17-81-5  
17-81-6



NEW

17-77-6



NEW

17-79-6  
Matching Band Available



NEW

13-134-5



NEW

13-135-5



NEW

13-133-2.5



NEW

13-168-4

ALL WEIGHTS ARE APPROXIMATE



17-92  
17-94  
17-96



17-90



17-93

Stones NOT Included

	Order #	Available In	Description	Price
A	17-87-5	14k Y/W	5mm SQ & 16) .02ct - 3.30 dwt	\$419 Y, \$426 W
A	17-87-6	14k Y/W	6mm SQ & 16) .02ct - 2.58 dwt	\$291 Y, \$298 W
A	17-87-7	14k Y/W	7mm SQ & 20) .02ct - 3.84 dwt	\$450 Y, \$457 W
B	17-81-4	14k Y/W	4mm SQ, 44) .015 & 12) .01ct - 3.14 dwt	\$375 Y, \$382 W
B	17-81-5	14k Y/W	5mm SQ, 44) .02 & 16) .005ct - 2.77 dwt	\$325 Y, \$332 W
B	17-81-6	14k Y/W	6mm SQ, 40) .02 & 20) .005ct - 3.44 dwt	\$385 Y, \$392 W
C	17-77-6	14k Y/W	6mm SQ & 6) .005ct - 1.61 dwt	\$222 Y, \$229 W
D	17-79-6	14k Y/W	6mm Cush, 40) .02 & 16) .005ct - 3.27 dwt	\$395 Y, \$402 W
D	17-79-6WR	14k Y/W	25) .02ct (Band for 17-79-6) - 1.90 dwt	\$365 Y, \$372 W
E	13-134-5	14k Y/W	5mm Cush, 10) .01 & 16) .005ct - 1.78 dwt	\$244 Y, \$252 W
F	13-135-5	14k Y/W	5mm Cush, 8) .04, 30) .01 & 60) .005ct - 4.35 dwt	\$492 Y, \$499 W
G	13-133-2.5	14k Y/W	4) 2.5mm SQ, 2) 2mm SQ & 8) .02, 18) .01ct - 3.49 dwt	\$404 Y, \$411 W
H	13-168-4	14k Y/W	4mm SQ & 24) .005ct - 2.18 dwt	\$269 Y, \$277 W
I	17-92	14k Y/W	8x5 PS & 11) .02-.03ct - 1.56 dwt	\$212 Y, \$219 W
I	17-94	14k Y/W	10x7 PS & 12) .03-.04ct - 2.20 dwt	\$254 Y, \$261 W
I	17-96	14k Y/W	12x8 PS & 14) .03-.04ct - 2.49 dwt	\$371 Y, \$378 W
J	17-90	14k Y/W	12x8 PS - 2.36 dwt	\$302 Y, \$309 W
K	17-93	14k Y/W	9x6 PS - 2.52 dwt	\$413 Y, \$420 W



16-115



16-94



16-91  
16-92

16-92 shown set  
Stones NOT Included



18-250



18-307



18-305



18-310



18-311



18-313

ALL WEIGHTS ARE APPROXIMATE

	<u>Order #</u>	<u>Available In</u>	<u>Description</u>	<u>Price</u>
A	16-115	14k Y/W	7x3.5 MQ & 12) .01ct - 2.01 dwt	\$248 Y, \$255 W
B	16-94	14k Y/W	10x5 MQ & 4) .015ct - 2.91 dwt	\$383 Y, \$390 W
C	16-91	14k Y/W	8x4 MQ - 1.90 dwt	\$251 Y, \$258 W
C	16-92	14k Y/W	10x5 MQ - 2.19 dwt	\$311 Y, \$318 W
D	18-250	14k Y/W	5mm Heart Shape - 1.72 dwt	\$222 Y, \$229 W
E	18-307	14k Y/W	2) 5mm Trillion & 16) .01ct - 3.84 dwt	\$435 Y, \$442 W
F	18-305	14k Y/W	7mm Trillion & 1) .02ct - 2.76 dwt	\$369 Y, \$376 W
G	18-310	14k Y/W	2) 6mm Trillion - 3.60 dwt	\$421 Y, \$428 W
H	18-311	14k Y/W	7mm Trillion - 2.10 dwt	\$277 Y, \$284 W
I	18-313	14k Y/W	8mm Trillion & 1) .02ct - 2.16 dwt	\$290 Y, \$297 W