

## Nice Quality Diamond Earrings, Four Prong Available 14K Y/W with Friction Back



For blank mountings see page 157.

|  |        |                |          |        |
|--|--------|----------------|----------|--------|
|  | .04ct  | RE 04/7637/24  | \$96     | G-H I1 |
|  | .06ct  | RE 06/7637/24  | \$123    | G-H I1 |
|  | .08ct  | RE 08/7637/24  | \$150    | G-H I1 |
|  | .10ct  | RE 10/7637/24  | \$177    | G-H I1 |
|  | .12ct  | RE 12/7637/24  | \$204    | G-H I1 |
|  | .16ct  | RE 16/7637/24  | \$306    | G-H I1 |
|  | .20ct  | RE 20/7637/24  | \$375    | G-H I1 |
|  | .25ct  | RE 25/7637/24  | \$459    | G-H I1 |
|  | .33ct  | RE 33/7637/24  | \$693    | G-H I1 |
|  | .40ct  | RE 40/7637/24  | \$984    | G-H I1 |
|  | .50ct  | RE 50/7637/24  | \$1239   | G-H I1 |
|  | .66ct  | RE 66/7637/24  | \$1887   | G-H I1 |
|  | .75ct  | RE 75/7637/24  | \$2256   | G-H I1 |
|  | 1.00ct | RE 100/7637/24 | \$3975   | G-H I1 |
|  | 1.50ct | RE 150/7637/24 | \$8655   | G-H I1 |
|  | 2.00ct | RE 200/7637/24 | \$18,105 | G-H I1 |

## Three Prong Martini Style Nice Quality Diamond Earrings 14K Y/W with Friction Back



For blank mountings see page 157.

|        |                |          |        |
|--------|----------------|----------|--------|
| .25ct  | RE 25/7480/24  | \$468    | G-H I1 |
| .33ct  | RE 33/7480/24  | \$699    | G-H I1 |
| .50ct  | RE 50/7480/24  | \$1242   | G-H I1 |
| .75ct  | RE 75/7480/24  | \$2286   | G-H I1 |
| 1.00ct | RE 100/7480/24 | \$3990   | G-H I1 |
| 1.50ct | RE 150/7480/24 | \$8655   | G-H I1 |
| 2.00ct | RE 200/7480/24 | \$18,105 | G-H I1 |

## Three Prong Basket Style Nice Quality Diamond Earrings 14K Y/W with Friction Back



For blank mountings see page 157.

|        |                |          |        |
|--------|----------------|----------|--------|
| .20ct  | RE 20/7483/24  | \$384    | G-H I1 |
| .25ct  | RE 25/7483/24  | \$468    | G-H I1 |
| .40ct  | RE 40/7483/24  | \$993    | G-H I1 |
| .50ct  | RE 50/7483/24  | \$1266   | G-H I1 |
| .75ct  | RE 75/7483/24  | \$2286   | G-H I1 |
| 1.00ct | RE 100/7483/24 | \$4005   | G-H I1 |
| 1.50ct | RE 150/7483/24 | \$8640   | G-H I1 |
| 2.00ct | RE 200/7483/24 | \$18,105 | G-H I1 |

## Four Prong Solid Back Nice Quality Diamond Pendants Available 14K Y/W

For blank mountings see page 174.

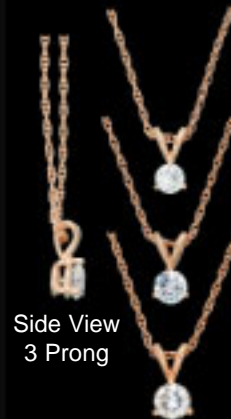


|  |       |               |        |        |
|--|-------|---------------|--------|--------|
|  | .10ct | RP 10/7637/24 | \$225  | G-H I1 |
|  | .15ct | RP 15/7637/24 | \$411  | G-H I1 |
|  | .20ct | RP 20/7637/24 | \$564  | G-H I1 |
|  | .25ct | RP 25/7637/24 | \$699  | G-H I1 |
|  | .33ct | RP 33/7637/24 | \$1020 | G-H I1 |
|  | .50ct | RP 50/7637/24 | \$2055 | G-H I1 |

\*Pendants include an 18" rope chain. Substitutions are available. Please see our complete chain section beginning on page 145.

## Three Prong Basket Style Nice Quality Diamond Pendants Available 14K Y/W

For blank mountings see page 175.



Side View  
3 Prong

|  |       |               |        |        |
|--|-------|---------------|--------|--------|
|  | .25ct | RP 25/7583/24 | \$729  | G-H I1 |
|  | .33ct | RP 33/7583/24 | \$1053 | G-H I1 |
|  | .50ct | RP 50/7583/24 | \$2085 | G-H I1 |