

Shanks



Specialty / Arthritic	92-93
Victorian Styles	93
Split Shanks	94
Assemble & Set	95
Cathedral Shanks	96-97
Inside Round Shanks	98
Half Shanks	99
Notched Shanks	99-100
Fancy Shanks	101
Shanks for Tops & Clusters	102
Gents' Shanks	102

Use these charts to browse shanks by mm size.

Part #	1.0 - 1.9mm Shanks	Page
SH-28	1.1mm at split, 2.2mm at bottom (shank for 19-28 mtg)	95
SH-29	1.1mm at split, 2.3mm at bottom (shank for 19-29 mtg)	95
SH-30	1.1mm at split, 2.3mm at bottom (shank for 19-30 mtg)	95
SH-31	1.1mm at split, 2.4mm at bottom (shank for 19-31 mtg)	95
SH-32	1.1mm at split, 2.4mm at bottom (shank for 19-32 mtg)	95
4-47283	1.5mm Half Round Shank	99
6-4760	1.5mm Split Shank	94
4-47071	1.7mm Cathedral Shank	96
4-47284	1.8mm Half Round Shank	99

Part #	2.0 - 2.4mm Shanks	Page
4-4759IR	2mm Inside Round Cathedral Shank	97
6-4762	2mm Split Shank	94
4-4753	2mm Cathedral Shank	97
SH-310	2mm Half Round, 3/4 Shank	95
6-11003	2mm Finger Fit (Finger Sz 2-5.5 closed)	92
6-11004	2mm Finger Fit (Finger Sz 5-9 closed)	92
48-472	2.2mm Fully Notched Band	99
48-473	2.2mm Partly Notched Band	99
4-945	2.2mm Half Round Shank	100
4-750	2.3mm Rounded 3/4 Shank	95
4-740	2.3mm Rounded 3/4 Shank	95
4-730	2.3mm Rounded 3/4 Shank	95
4-47296	2.3mm Flat Bottom Shank	101
4-47234	2.4mm Half Round Shank	100
SH-340	2.4mm Flat 3/4 Shank	95
SH-360	2.4mm Flat 3/4 Shank	95

cont. on next page





Shanks

Use these charts to browse shanks by mm size.

Part #	2.5mm Shanks	Page
4-487	2.5mm 4 Prong Angled Shank	100
4-4761	2.5mm Cathedral Shank	97
4-4771	2.5mm Cathedral Shank	97
4-4003	2.5mm Half Shank	99
4-47287IR	2.5mm Inside Round 6 Prong Angled Shank	98
4-4761IR	2.5mm Inside Round Cathedral Shank	98
6-4764	2.5mm Split Shank	94
4-4709	2.5mm Half Round Shank	101
4-940	2.5mm Shank	100
4-47287	2.5mm Shank for 6 Prong Head	100
SH-363	2.5mm Flat 3/4 Shank	95
4-752	2.5mm Rounded 3/4 Shank	95
6-4774	2.5mm Victorian Designer Split Shank	94
SHV18-50	2.5mm Flat Bottom Victorian Designer Shank	93
6-025	2.5mm LockShank	93
6-325	2.5mm SuperFit Shank	92

Part #	2.6 - 2.9mm Shanks	Page
14-86	2.66 x 3.30mm Side Swirl Shank	101
4-488	2.6mm Angled Shank for 4 Prong	100
4-47289	2.6mm Flat Shank	99
4-47285	2.6mm Flat Shank for 6 Prong	101
SH-312	2.6mm Half Round 3/4 Shank	95
4-47020	2.6mm Half Round Shank	100
4-47278IR	2.7mm Inside Round Half Round Shank	98
4-108	2.7mm Knife Edge Shank	100
4-47278	2.7mm Shank	99
V4-400	2.7mm Tapered Victorian Designer Shank for V Set	93
4-47130	2.8mm Flat Top Shank	101
4-4004	2.8mm Half Shank	99
4-47129	2.8mm Inside Round Half Round Shank	98
4-47288IR	2.8mm Inside Round Half Round Shank	98
4-47291	2.8mm for 6 prong	100
4-4706	2.8mm Half Round Shank	100
4-47280	2.8mm Half Round Shank	99
4-4750	2.8mm Low Cathedral Shank	100
48-4706	2.8mm Half Round Band	99
4-47279	2.8mm Half Round Shank	99
4-47288	2.8mm Half Round Shank	99
6-4770	2.8mm Designer Split Shank (holds 40) .015ct)	94

Part #	3.0mm Shanks	Page
4-4720	3.1mm Half Round Shank	100
4-4784	3.05x2.19mm Cathedral Shank (holds 8) .015-.02ct)	96
4-4772	3mm Cathedral Shank	97
4-4762	3mm Cathedral Shank	97
4-47063	3mm Extra High Center Shank	100
4-4797	3mm Flat Shank	100
4-109	3mm Knife Edge Shank	100
4-4754	3mm Cathedral Shank	97
SH-342	3mm Shank for Mtg 19-342	95
V4-4754	3mm Cathedral Victorian Designer Shank	93
6-11014	3mm Finger Fit (Finger Sz 2-5.5 closed)	92
6-11015	3mm Finger Fit (Finger Sz 5-9 closed)	92
V4-402	3mm Tapered Victorian Designer Shank for Round	93
4-4786WR	3.03 x 2.43mm Band (holds 13) .02ct)	96

Shanks

Use these charts to browse shanks by mm size.

Part #	3.1 - 3.9mm Shanks	Page
SH11-616	3.1 x 2.7mm Tapered Victorian Designer Shank for 11-616 Mtg	93
4-47292	3.1mm Heavy Flat Bottom Shank	101
4-4786	3.23 x 2.64mm Flat Bottom Cathedral Shank (holds 12) .02ct)	96
4-4005	3.35mm Half Shank	99
4-47286IR	3.3mm Inside Round Half Round Shank	98
4-47290	3.4mm Heavy Half Round Shank	99
4-4798	3.5mm Heavy Half Round Shank	100
SH-345	3.5mm Flat Shank	95
SH-315	3.5mm Shank for 19-315 Mtg	95
6-035	3.5mm Lockshank	93
4-4773	3.6mm Cathedral Shank	97
4-4763	3.6mm Cathedral Shank	97
4-47293	3.6mm Inside Round Knife Edge Shank	98
4-47294	3.6mm Inside Round Multi-Domed Shank	98
4-47124	3.6mm Inside Round Half Round Pinched Shank	98
4-47125	3.6mm Inside Round Knife Edge Shank	98
4-4799	3.9mm Flat Shank	100

Part #	4.0 - 4.9mm Shanks	Page
6-47445	4mm Outside Diam Split Shank	94
4-4760	4mm High Center Shank	96
6-340	4mm SuperFit Shank	92
4-47128	4 x 3mm Tapered Inside Round Shank	98
4-4755	4.1mm Cathedral Shank	97
4-4785	4.12 x 3.14mm Cathedral Shank (holds 8) .02-.03ct)	96
6-47200	4.22mm Outside Diameter 2 Prong Split Shank	94
14-95	4.31 x 3.26mm Leaf/Berry Shank	101
11-537	4.37 x 3.58mm Cathedral Shank (holds 10) .05ct)	96
6-47205	4.38mm Outside Diameter 2 Prong Split Shank	94
11-511	4.41 x 3.6mm Cathedral Shank (holds 6) .04ct)	96
6-11007	4.4mm Double Finger Fit (Finger Sz 5-9 closed)	92
6-11009	4.4mm Double Finger Fit (Finger Sz 2-5.5 closed)	92
6-045	4.5mm LockShank	93
14-64	4.76 x 2.17mm Swirl Shank	101

Part #	5.0 - 5.9mm Shanks	Page
V4-4757	5mm Cathedral Victorian Designer Shank	93
4-4756	5mm Cathedral Shank	97
4-47126	5mm Inside Round Split Shank	98
14-81	5.67 x 1.45mm Swirl Shank	101

Part #	6.0 - 6.9mm Shanks	Page
6-47195	6mm Outside Diameter Leaf Split Shank	94
4-4766	6mm Cathedral Shank	97
14-93	6.02 x 2.90mm Cathedral Leaf Shank (holds 14) .0075ct)	96

Part #	7.0 - 7.9mm Shanks	Page
4-4757	7mm Cathedral Shank	97
18-65	7.01 x 4.56mm Two Tone Swirl Semi Mount	101
4-2063	7.1mm Replacement Shank	101
6-4790	7.37mm 2 Prong Split Shank	94
6-47277	7.9mm Outside Diameter 3 Prong Split Shank	94

Part #	8.0 - 14mm Shanks	Page
4-47006	9mm Outside Diameter Fancy Split Shank	94
4-47051	9.5mm Outside Diameter Fancy Split Shank	94
4-47131	13.3 x 2.3mm Diagonal Shank	101



SHANKS - Listed by mm

1.800.282.8285 • www.sefindings.com





Specialty Shanks



A - 2mm Single



B - 4.4mm Double



C - 3mm Wide

Finger Fit Shanks 10k, 14k, 18k & Platinum

	Order #	Available	Finger Sizes	Price
A	6-11003	14k Y/W	2-5 1/2 when closed	\$593
A	6-11004	14k Y/W	5-9 when closed	\$596
A	D6-11003	18kY	2-5 1/2 when closed	\$910
A	D6-11004	18kY	5-9 when closed	\$910
A	A6-11003	Platinum	2-5 1/2 when closed	\$1850
A	A6-11004	Platinum	5-9 when closed	\$1850
A	F6-11005	10k Y/W	2-5 1/2 when closed	\$473
A	F6-11006	10k Y/W	5-9 when closed	\$473
B	6-11009	14k Y/W	2-5 1/2 when closed	\$1185
B	6-11007	14k Y/W	5-9 when closed	\$1191
B	D6-11009	18kY	2-5 1/2 when closed	\$1818
B	D6-11007	18kY	5-9 when closed	\$1818
B	A6-11009	Platinum	2-5 1/2 when closed	\$3700
B	A6-11007	Platinum	5-9 when closed	\$3700
B	F6-11010	10k Y/W	2-5 1/2 when closed	\$946
B	F6-11008	10k Y/W	5-9 when closed	\$946
C	6-11014	14k Y/W	2-5 1/2 when closed	\$750
C	6-11015	14k Y/W	5-9 when closed	\$776
C	D6-11014	18kY	2-5 1/2 when closed	\$1135
C	D6-11015	18kY	5-9 when closed	\$1135



Finger Fit Shanks

Available in 14k Y/W, 10k Y/W, 18kY & Platinum

Complete 360 degree shank.

Finger Fit shanks will open 3 sizes to fit over knuckle, then lock securely.

Parts for Finger Fit Shanks

Cover Latches

6-11020 - Single Cover Latch...\$78

6-11040 - Double Cover Latch...\$138

Replacement Parts

FFW - FREE Shank Replacement Wire
(wire is pressure fit, not soldered)

FFG - FREE Plastic multi-sizer Ring Gauge

Finger Fit Demo Kit

Benefit from the added sales generated from Finger Fit's national ad campaign in publications such as Better Homes and Gardens, Modern Maturity, Southern Living and Sunset.

Kit Includes: 10kY demo ring set with 3/8ct cz.
Flexible Finger Fit measuring gauge
and installation instructions.

FFDEMO ... \$658



FFG
Free



A - 2.5mm



B - 4mm



Superfit Shanks

Available in 14k Y or W. Opens fully to bypass swollen knuckles. Natural spring tension eliminates the need for a spring that could break or wear out. Push Button release. Dual latching system "clicks" when securely closed. 18k, Platinum & other widths available by special order.
Stocked in finger sizes 3.5-8.

A. 6-325 - 2.5mm...\$1104 sz 6
B. 6-340 - 4.0mm...\$1246 sz 6

6-SFS

Stylus Pin for quick latch release
First one is FREE with Shank Purchase
Replacements at \$7.50 ea

Superfit Tools Now in Stock

Superfit Finger Sizer - T-917...\$35.58

Superfit Pliers - T-921...\$275.40

See the Southeastern Findings Tool Catalog for more information.



Adjusto Shanks 14k Y or W Die Struck

Installation Instructions

1. Slide Adjusto Shank to the closed position.
2. Hold both shanks firmly against one another, preferably on a mandrel, and mark above the joint where to cut the shank. Cut the shank at an accurate angle and align with the Adjusto Shank. Then, solder the joint.
3. With the aid of a flexible shaft and appropriate selected wheels, shape the soldered joint to the same width as the applied shank.
4. Lightly buff both the inside and outside of the soldered part. The sliding action of the Adjusto Shank can be opened or closed very easily by the person wearing the ring.
5. Slide to full open position. Slip onto finger sideways...then turn setting upright. Slide shank closed for a firm and comfortable fit.

6-11001 3.4mm Finger Sz 5-7 \$381
6-11002 3.4mm Finger Sz 7-9 \$390

Specialty Shanks



SHANKS - LockShanks & Victorian Styles

1.800.282.8285 • www.sefindings.com



A
6-025
2.5mm

B
6-035
3.5mm

C
6-045
4.5mm



The Lockshank Company

Lock Shanks

Available in 14k Y or W.
Opens fully to accommodate any size knuckle.
Opens easily with just a fingernail.
Stays securely locked until intentionally opened.
Keeps top heavy rings oriented correctly.
**18k & Platinum available by Special Order.
**Sizes 2, 5.5, 6.5, 7.5, 8.5, 9.5 & 10 available by Special Order.
Allow 10-12 working days for Special Orders.

A	6-025	2.5mm	Sz 6, 7, 8	\$1299 sz 7
B	6-035	3.5mm	Sz 6, 7, 8	\$1463 sz 7
C	6-045	4.5mm	Sz 6 & 10	\$1432 Sz 6, \$1647 sz 10

Victorian Collection



A



V4-402



B



V4-400



C



V4-4754



D



V4-4757



E



SHV18-50

Order **V18-50WR**
For Matching Band



F



SH11-616

Order #	mm Size	Available	Style	Price
A V4-402	3x1.8 Tapered	14k Y/W	Shank for Round Setting - 1.95 dwt	\$527 Y, \$539 W
A DV4-402	3x1.8 Tapered	18k Y/W	Shank for Round Setting - 2.23 dwt	\$641 Y, \$653 W
A AV4-402	3-1.8 Tapered	Platinum	Shank for Round Setting - 3.30 dwt	\$1904
B V4-400	2.7x1.8 Tapered	14k Y/W	Shank for V Set - 2.30 dwt	\$509 Y, \$521 W
B DV4-400	2.7x1.8 Tapered	18k Y/W	Shank for V Set - 2.54 dwt	\$690 Y, \$702 W
B AV4-400	2.7x1.8 Tapered	Platinum	Shank for V Set - 3.90 dwt	\$1877
C V4-4754	3mm	14k Y/W	Cathedral - 3.01 dwt	\$659 Y, \$671 W
D V4-4757	5mm	14k Y/W	Cathedral - 4.69 dwt	\$913 Y, \$925 W
E SHV18-50	2.5mm	14k Y/W	Shank for V18-40 & V18-50 - 1.68 dwt	\$401 Y, \$413 W
E ASHV18-50	2.5mm	Platinum	Shank for V18-40 & V18-50 - 3.55 dwt	\$1351
F SH11-616	3.1x2.7 Tapered	14k Y/W	Shank for 11-616 or use w/ 3 Stone Top - 1.66 dwt	\$349 Y/W

ALL WEIGHTS ARE APPROXIMATE

Split Shanks



STONES NOT INCLUDED



Beaded Style



Order #	Available	Description	Price
A 6-4760	14k Y/W	1.5mm, 2.30 dwt - Cast	\$539 Y, \$551 W
B 6-4762	14k Y/W	2.0mm, 4.00 dwt - Cast	\$816 Y, \$828 W
C 6-4764	14k Y/W	2.5mm, 6.00 dwt - Cast	\$1190 Y, \$1201 W
D 6-4774	14k Y/W	2.5mm, 7.50 dwt - Victorian Style, Cast	\$1400 Y, \$1412 W
E 6-4770	14k Y/W	40) .015ct, Beaded Style, 4.70 dwt - Cast	\$945 Y, \$957 W
F 6-47445	14k Y/W	4mm OD, 1.61 dwt, Die Struck	\$328
G 6-4772	14k Y/W	6) .015, 16) .025 & 8) .04ct, 6.00 dwt - Cast	\$1162 Y, \$1174 W
H 4-47051	14k Y/W	9.5mm OD, 1.43 dwt - Die Struck	\$287
I 4-47006	14k Y	9.0mm OD, 1.86 dwt - Die Struck	\$338
J 6-47195	14k Y/W	6.0mm OD, 2.66 dwt - Cast	\$492 Y, \$503 W
K 6-47286	14k Y/W	5mm OD, 1.58 dwt - Y Die Struck, W Cast	\$314 Y, \$326 W
L 6-47277	14k Y/W	7.9mm OD, 2.39 dwt - Y Die Struck, W Cast	\$502 Y, \$514 W
M 6-4790	14k Y/W	7.37mm OD, 1.79 dwt - Cast	\$306
N 6-47200	14k Y/W	4.22mm OD, 1.29 dwt - Cast	\$296 Y, \$307 W
O 6-47205	14k Y/W	4.38mm OD, 1.66 dwt - Cast	\$349 Y, \$361 W

OD is Outside Diameter



Assemble & Set Wedding Rings



SHANKS - Assemble & Set

1.800.282.8285 • www.sefindings.com



14k Y/W

A : 2-730 Series

Ct	Stone Sz.	TW	\$
.16	3) .05	3/16	\$50
.33	3) .12	1/3	\$85
.50	3) .16	1/2	\$87
.60	3) .20	5/8	\$87
.75	3) .25	3/4	\$131
1.25	3) .40	1 1/4	\$157
1.50	3) .50	1 1/2	\$158
4-730	Shank		\$215

For Platinum Tops Order **A2-730**
Platinum Shank **ASH4-730**



Shanks Tapers 2.3x1.8mm

B : 2-740 Series

Ct	Stone Sz.	TW	\$
.20	4) .05	1/5	\$54
.40	4) .10	3/8	\$95
.60	4) .15	5/8	\$96
.80	4) .20	7/8	\$100
1ct	4) .25	1 ct	\$158
1.60	4) .40	1 5/8	\$196
2ct	4) .50	2 ct	\$198
4-740	Shank		\$213

For Platinum Tops Order **A2-740**
Platinum Shank **ASH4-740**



C : 2-750 Series

Ct	Stone Sz.	TW	\$
.25	5) .05	1/4	\$74
.50	5) .10	1/2	\$155
.75	5) .15	3/4	\$156
1ct	5) .20	1 ct	\$158
1.25	5) .25	1 1/4	\$237
4-750	Shank		\$183

For Platinum Tops Order **A2-750**
Platinum Shank **ASH4-750**



Shank Tapers 2.3x1.8mm

D : 2-750 Series (Large Sizes)

Ct	Stone Sz.	TW	\$
2ct	5) .40	2 ct	\$279
2.50	5) .50	2 1/2	\$280
4-752	Shank		\$236



Shank Tapers 2.5x2.3mm

Assemble & Set Three Stone...Tops 14kW or Platinum, Shanks 14k Y/W

3-28

Top
1) .25, 2) .12
\$113 Y/W
A3-28 Plat



Full Mtg
19-28

SH28

Shank
1.1mm at Split
2.2mm at Bottom
\$208

3-29

Top
1) .40, 2) .18
\$139 Y/W
A3-29 Plat



Full Mtg
19-29

SH29

Shank
1.1mm at Split
2.3mm at Bottom
\$214

3-30W

Top
1) .50, 2) .25
\$161 W
A3-30 Plat



Full Mtg
19-30

SH30

Shank
1.1mm at Split
2.3mm at Bottom
\$233

3-31W

Top
1) .75, 2) .37
\$193 W
A3-31 Plat



Full Mtg
19-31

SH31

Shank
1.1mm at Split
2.4mm at Bottom
\$234

3-32W

Top
1) 1ct, 2) .50
\$216 W
A3-32 Plat

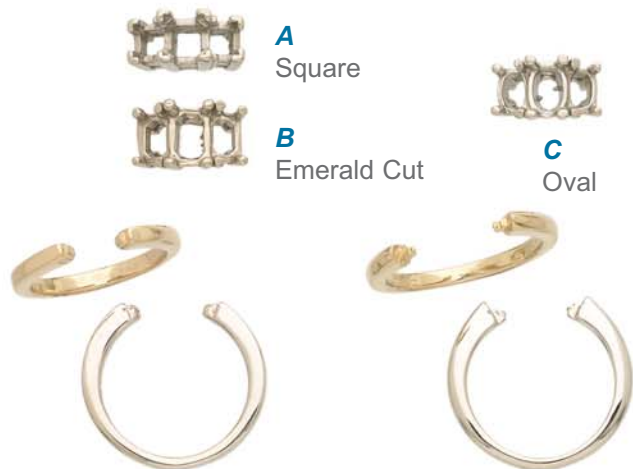


Full Mtg
19-32

SH32

Shank
1.1mm at Split
2.4mm at Bottom
\$239

Tops 14kW or Plat, Shanks 14k Y/W or Plat



	Princess	Stone Size	Price	Shank	Size	Price
A	3-340W	1) 4, 2) 3m SQ	\$224	SH340	2.4mm	\$507
A	3-342W	1) 5, 2) 4m SQ	\$272	SH342	3mm	\$595
A	3-345W	1) 6, 2) 5m SQ	\$303	SH345	3.5mm	\$595
	<u>EC</u>	<u>Stone Size</u>	<u>Price</u>	<u>Shank</u>	<u>Size</u>	<u>Price</u>
B	3-360W	1) 6x4, 2) 5x3m	\$182	SH360	2.4mm	\$507
B	3-363W	1) 7x5, 2) 6x4m	\$256	SH363	2.5mm	\$507
	<u>Oval</u>	<u>Stone Size</u>	<u>Price</u>	<u>Shank</u>	<u>Size</u>	<u>Price</u>
C	3-310W	1) 6x4, 2) 5x3	\$157	SH310	2mm	\$294
C	3-312W	1) 7x5, 2) 6x4	\$254	SH312	2.6mm	\$377
C	3-315W	1) 8x6, 2) 6x4	\$322	SH315	3.5mm	\$521

Platinum Available in Ovals and Square See Pg 75



Cathedral Shanks

STONES NOT INCLUDED



ALL WEIGHTS ARE APPROXIMATE

Order #	Available	Description	Price
A 14-93	14k Y/W	14) .0075ct, 3.42 dwt - 6.02x2.90mm - Cast	\$594 Y, \$606 W
B 11-537	14k Y/W	10) .05ct, 3.58 dwt - 4.37x3.58mm - Cast	\$726 Y, \$738 W
C 11-511	14k Y/W	6) .04ct, 2.70 dwt - 4.41x3.60mm - Cast	\$569 Y, \$581 W
D 4-4786	14k Y/W	12) .02ct, 2.82 dwt - 3.23x2.64mm - Cast	\$512 Y, \$523 W
D 4-4786WR	14k Y/W	13) .02ct Matching Band for 4-4786, 3.03x2.43mm	\$535 Y, \$547 W
D A4-4786	Platinum	12) .02ct, 4.80 dwt - Platinum/Cobalt Cast	\$2448
E 4-4784	14k Y/W	8) .015-.02ct, 2.94 dwt - 3.05x2.19mm - Cast	\$575 Y, \$587 W
F 4-4785	14k Y/W	8) .02-.03ct, 4.24 dwt - 4.12x3.14mm - Cast	\$909 Y, \$920 W
G V4-4754	14k Y/W	3mm, 3.10 dwt - Cast	\$659 Y, \$671 W
H V4-4757	14k Y/W	5mm, 4.40 dwt - Cast	\$913 Y, \$925 W
I 4-47071	14k Y/W	1.7mm, 1.23 dwt - Cast	\$235 Y, \$247 W
J 4-4760	14k Y/W	4mm, 2.60 dwt - Hollow, Cast	\$468

Cathedral Shanks



SHANKS - Cathedral



	Order #	Available	Description	Price
A	4-4753	14k Y/W	2mm, 2.00 dwt - Cast	\$487 Y, \$499 W
A	A4-47053	Plat/Cobalt	2mm, 2.64 dwt - Cast	\$1693
B	4-4754	14k Y/W	3mm, 2.90 dwt - Cast	\$617 Y, \$629 W
B	D4-4754	18k Y/W	3mm, 3.51 dwt - Cast	\$845 Y, \$857 W
B	A4-47054	Plat/Cobalt	3mm, 4.40 dwt - Cast	\$2187
C	4-4755	14k Y/W	4.1mm, 4.04 dwt - Cast	\$750 Y, \$762 W
C	D4-4755	18k Y/W	4.1mm, 4.14 dwt - Cast	\$1031Y, \$1043W
D	4-4756	14k Y/W	5mm, 4.10 dwt - Cast	\$942 Y, \$954 W
E	4-4766	14k Y/W	6mm, 4.55 dwt - Cast	\$920 Y, \$932 W
F	4-4757	14k Y/W	7mm, 5.99 dwt - Cast	\$1164Y, \$1176W
G	4-4761	14k Y/W	2.5mm, 1.90 dwt - Die Struck	\$307
G	D4-4761	18k Y/W	2.5mm, 1.91 dwt - Die Struck	\$450
G	A4-4761	Platinum	2.5mm, 2.92 dwt - Die Struck	\$1183
H	4-4762	14k Y/W	3mm, 2.84 dwt - Die Struck	\$470
H	D4-4762	18kY	3mm, 3.32 dwt - Die Struck	\$669
H	A4-4762	Platinum	3mm, 4.65 dwt - Die Struck	\$1877
I	4-4763	14k Y/W	3.6mm, 3.14 dwt - Die struck	\$542
I	D4-4763	18k Y/W	3.6mm, 3.79 dwt - Die Struck	\$770
I	A4-4763	Platinum	3.6mm, 5.34 dwt - Die struck	\$2162
J	4-4771	14k Y/W	2.5mm, 1.81 dwt - Die Struck	\$295
J	D4-4771	18k Y/W	2.5mm, 2.03 dwt - Die struck	\$447
J	A4-4771	Platinum	2.5mm, 2.79 dwt - Die Struck	\$1155
K	4-4772	14k Y/W	3mm, 2.80 dwt - Die Struck	\$448
K	A4-4772	Platinum	3mm, 4.45 dwt - Die Struck	\$1830
L	4-4773	14k Y/W	3.6mm, 3.02 dwt - Die Struck	\$530
L	A4-4773	Platinum	3.6mm, 5.34 dwt - Die Struck	\$2039
M	4-4759IR	14k Y/W	2.0mm Inside Round - 1.59 dwt Die Struck	\$285
N	4-4761IR	14k Y/W	2.5mm Inside Round - 2.18 dwt Die Struck	\$381

1.800.282.8285 • www.sefindings.com



ALL WEIGHTS ARE APPROXIMATE



Inside Round Shanks, Die Struck



A
4-47124 14k
A4-47124 Plat
D4-47124 18k



B
4-47125 14k
A4-47125 Plat
D4-47125 18k



C 4-47126

Knife Edge



D
4-47128 14k
A4-47128 Plat
D4-47128 18k



E
4-47129 14k
D4-47129 18k



F 4-47278IR



G 4-47286IR



H 4-47287IR



I 4-47288IR



J
4-47293 14k
A4-47293 Plat

Knife Edge



K
4-47294 14k
A4-47294 Plat



4-4759IR

L



4-4761IR

M

Order #	Available	Description	Price
A 4-47124	14k Y/W	3.6mm Pinched - 2.71 dwt	\$439
A D4-47124	18kY	3.6mm Pinched - 3.20 dwt	\$688
A A4-47124	Platinum	3.6mm Pinched - 4.36 dwt	\$1752
B 4-47125	14k Y/W	3.6mm Knife Edge - 2.63 dwt	\$426
B D4-47125	18kY	3.6mm Knife Edge - 3.08 dwt	\$663
B A4-47125	Platinum	3.6mm Knife Edge - 4.17 dwt	\$1707
C 4-47126	14k Y/W	5mm Split - 4.00 dwt	\$647
D 4-47128	14k Y/W	4x3mm Tapered - 1.91 dwt	\$340
D D4-47128	18k Y/W	4x3mm Tapered - 2.38 dwt	\$537
D A4-47128	Platinum	4x3mm Tapered - 3.38 dwt	\$1333
E 4-47129	14k Y/W	2.8mm - 1.30 dwt	\$310
E D4-47129	18k Y/W	2.8mm - 2.07 dwt	\$473
F 4-47278IR	14k Y/W	2.7mm - 1.43 dwt	\$226
G 4-47286IR	14k Y/W	3.3mm - 1.97 dwt	\$308
H 4-47287IR	14k Y/W	2.5mm - 1.36 dwt	\$216
I 4-47288IR	14k Y/W	2.8mm - 1.47 dwt	\$255
J 4-47293	14k Y/W	3.6mm Knife Edge - 2.82 dwt	\$505
J A4-47293	Platinum	3.6mm Knife Edge - 4.76 dwt	\$1780
K 4-47294	14k Y/W	3.6mm Multi Domed - 3.25 dwt	\$502
K A4-47294	Platinum	3.6mm Multi Domed - 4.78 dwt	\$2472
L 4-4759IR	14k Y/W	2mm - 1.62 dwt	\$285
M 4-4761IR	14k Y/W	2.5mm - 2.18 dwt	\$381

Shanks, Die Struck

Unless Otherwise Noted



Wedding Band Styles



Use with 4 & 6 Prong Solitaires

Half Shanks



Notched

ALL WEIGHTS ARE APPROXIMATE



4-47284 14k
A4-47284 Plat



4-47287 14k
F4-47287 10k
D4-47287 18k



4-47288 14k
A4-47288 Plat
D4-47288 18k



4-47289



4-47278 14k
D4-47278 18k



4-47279



4-47280



4-47290 14k
A4-47290 Plat
D4-47290 18k

	Order #	Available	Description	Price
A	48-4706	14k Y/W	2.8mm - 1.45 dwt	\$229
B	48-472	14k Y/W	2.2mm - 1.04 dwt, Cast Fits 1/2, 5/8, 3/4 & 1ct	\$283 Y, \$295 W
C	48-473	14k Y/W	2.2mm - 1.15 dwt, Cast Fits 1.25, 1.50, 2ct & 2.50	\$281 Y, \$293 W
D	4-4003	14k Y/W	2.5mm - 0.72 dwt	\$124
E	4-4004	14k Y/W	2.8mm - 1.12 dwt	\$195
F	4-4005	14k Y/W	3.35mm - 1.62 dwt	\$277
G	4-47283	14k Y/W	1.5mm - 0.50 dwt	\$105
H	4-47284	14k Y/W	1.8mm - 0.73 dwt	\$119
H	A4-47284	Platinum	1.8mm - 2.37 dwt	\$438
I	4-47287	14k Y/W	2.5mm - 0.97 dwt	\$166
I	F4-47287	10k Y/W	2.5mm - 0.90 dwt	\$106
I	D4-47287	18k Y/W	2.5mm - 1.16 dwt	\$251
J	4-47288	14k Y/W	2.8mm - 1.13 dwt	\$186
J	D4-47288	18k Y/W	2.8mm - 1.15 dwt	\$291
J	A4-47288	Platinum	2.8mm - 1.82 dwt	\$733
K	4-47289	14k Y/W	2.6mm Flat Side - 1.16 dwt	\$190
L	4-47278	14k Y/W	2.7mm - 1.33 dwt	\$243
L	D4-47278	18k Y	2.7mm - 1.86 dwt	\$378
M	4-47279	14k Y/W	2.8mm - 1.26 dwt	\$206
N	4-47280	14k Y/W	2.8mm - 1.45 dwt	\$233
O	4-47290	14k Y/W	3.4mm - 1.47 dwt	\$249
O	D4-47290	18k Y	3.4mm - 1.59 dwt	\$361
O	A4-47290	Platinum	3.4mm - 2.24 dwt	\$915



SHANKS - Die Struck, Half Shanks & Notched

1.800.282.8285 • www.sefindings.com





Shanks, Die Struck

Unless Otherwise Noted

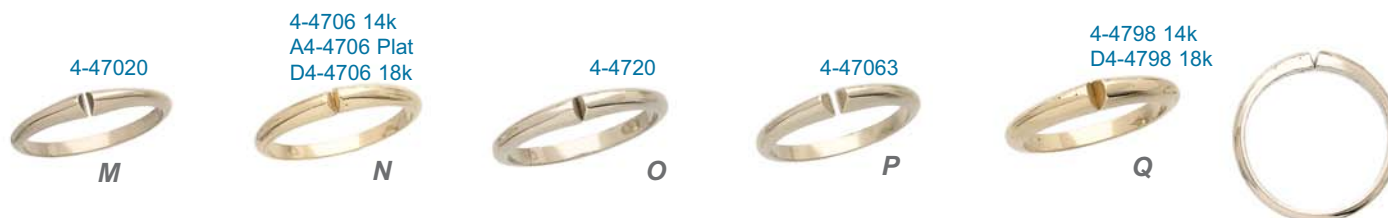
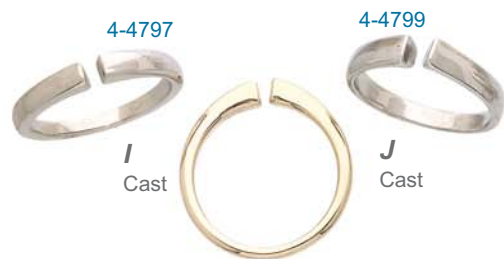
	Order #	Available	Description	Price
A	4-945	14k Y/W	2.2mm - 1.02 dwt	\$210
B	4-940	14k Y/W	2.5mm - 1.00 dwt	\$162
C	4-487	14k Y/W	2.5mm - 0.97 dwt	\$165
D	4-488	14k Y/W	2.6mm - 1.15 dwt	\$189
E	4-47287	14k Y/W	2.5mm - 0.95 dwt	\$166
F	4-47288	14k Y/W	2.8mm - 1.13 dwt	\$186
G	4-108	14k Y/W	2.7mm Knife Edge - 1.27 dwt	\$216
H	4-109	14k Y/W	3mm Knife Edge - 1.69 dwt	\$285
I	4-4797	14k Y/W	3mm, 1.87 dwt - Cast	\$456
J	4-4799	14k Y/W	3.9mm, 2.15 dwt - Cast	\$419
K	4-47234	14k Y/W	2.4mm - 1.16 dwt	\$183
L	4-4750	14k Y/W	2.8mm - 1.50 dwt	\$272
L	D4-4750	18kY	2.8mm - 1.99 dwt	\$420
L	A4-4750	Platinum	2.8mm - 2.71 dwt	\$1120
M	4-47020	14k Y/W	2.6mm - 1.03 dwt, Light Weight	\$169
N	4-4706	14k Y/W	2.8mm - 1.32 dwt	\$214
N	D4-4706	18k Y/W	2.8mm - 1.35 dwt	\$324
N	A4-4706	Platinum	2.8mm - 2.11 dwt	\$819
O	4-4720	14k Y/W	3.1mm - 1.37 dwt, Med Weight	\$283
P	4-47063	14k Y/W	3mm - 1.49 dwt, Ex High Center	\$243
Q	4-4798	14k Y/W	3.5mm - 1.83 dwt, Heavy Weight	\$353
Q	D4-4798	18k Y/W	3.5mm - 2.59 dwt	\$507



New

4-47291
14k Y/W
2.8mm Shank
6 Prong
\$197
A4-47291 Plat

L4-47281
Palladium
2.5mm Shank
4 Prong
1.07 dwt
\$169



Shanks, Cast

Unless Otherwise Noted



A
Flat Bottom
Cast



B
Flat Bottom
Cast



C
Flat Shank
Cast



D
Die Struck

D & E work great with
series 2-57, 2-153
& 2-164 settings.



E
Die Struck



F
Die Struck
Reversible
Streamlined
Diagonal or Bypass



G
Die Struck
Replacement
Shank



H
Cast



I
Cast



J
Cast
Leaf / Berry
Design



K
Cast



L
Cast

Order #	Available	Description	Price
A 4-47292	14k Y/W	3.1mm Flat Bottom - 2.28 dwt - Cast	\$544 Y, \$556 W
A A4-47292	Plat/Cobalt	3.1mm Flat Bottom - 3.70 dwt - Cast	\$1762
B 4-47296	14k Y/W	2.3mm Flat Bottom - 2.03 dwt - Cast	\$395
C 4-47285	14k Y/W	2.6mm, 2.15 dwt - Cast	\$498 Y, \$510 W
D 4-47130	14k Y/W	2.8mm Flat Top - 1.42 dwt - Die Struck	\$226
E 4-4709	14k Y/W	2.5mm Round Cut - 1.03 dwt - Die Struck	\$199
F 4-47131	14k Y/W	Diag or Bypass - 1.29 dwt - Die Struck	\$222
G 4-2063	14k Y/W	7.1mm - 2.61 dwt - Die Struck	\$502
H 14-81	14k Y/W	5.67x1.45mm, 1.65 dwt - Cast	\$326 Y, \$338 W
I 14-64	14k Y/W	4.76x2.17mm, 1.49 dwt - Cast	\$412 Y, \$423 W
J 14-95	14k Y/W	4.31x3.26mm, 1.34 dwt - Cast	\$269 Y, \$281 W
K 14-86	14k Y/W	4.66x3.30mm, 2.55 dwt - Cast	\$577 Y, \$589 W
L 18-65	14k TT	7.01x4.56mm, 3.55 dwt - Cast	\$873



Shanks for Tops, 14k Y/W Cast



6-2006
6-7mm
1.29 dwt
\$268 Y
\$280 W

6-2008
7.5-8.5mm
1.44 dwt
\$306 Y
\$317 W

6-2010
9.5-11mm
1.85 dwt
\$349 Y
\$361 W

6-2013
12-14mm
1.94 dwt
\$456 Y
\$468 W

See pages 78-81 for tops.



6-3006
6-7mm
1.76 dwt
\$445 Y
\$457 W

6-3008
7-8mm
1.38 dwt
\$359 Y
\$371 W

6-3009
8-9mm
1.47 dwt
\$362 Y
\$374 W

6-3010
9-10mm
1.82 dwt
\$427 Y
\$439 W

6-3011
10-11mm
2.10 dwt
\$480 Y
\$492 W

6-3012
11.5-13mm
2.05 dwt
\$463 Y
\$475 W

ALL WEIGHTS ARE APPROXIMATE



6-4013
12-13mm
1.59 dwt
\$363 Y
\$375 W

6-4014
13-14mm
1.58 dwt
\$395 Y
\$407 W

6-4016
15-16mm
2.01 dwt
\$423 Y
\$435 W



SH-9346
Shank for 15-9346/2023
Hollow Back
\$823 Y/W



3-515W 3-553W 3-1990W 3-760W

Many tops are available for blank shanks. See pages 78-81 in the settings section of this book for available styles.



15-9255
7.5mm Spread
3.40 dwt
\$586 Y
\$598 W

15-9258
8.5mm Spread
3.90 dwt
\$704 Y
\$710 W

15-9289
10mm Spread
5.54 dwt
\$738 Y
\$750 W

15-9290
10.5mm Spread
5.57 dwt
\$885 Y
\$896 W