



*Semi Mount 14k Y/W*

.45ct  
**RC 45/7648/24**  
G-H I1  
\$1320



Band  
.50ct  
**RC 50/7648/24WR**  
G-H I1  
\$1395

*Semi Mount 14k Y/W*

.55ct  
**RC 55/7126/24**  
G-H I1  
\$1644



Band  
.15ct  
**RC 15/7126/24WR**  
G-H I1  
\$699



*Semi Mount 14k Y/W*

.80ct 14K Y/W  
**RC 80/7643/24**  
G-H I1  
\$2010



Band  
1.04ct  
**RC 104/7643/24WR**  
G-H I1  
\$2355

*Semi Mount 14k Y/W*

.30ct 14K Y/W  
**RC 30/7644/24**  
G-H I1  
\$780



Band  
.35ct  
**RC 35/7644/24WR**  
G-H I1  
\$849



*Semi Mount 14k Y/W*

.75ct 14K Y/W  
**RC 75/7654/24**  
G-H I1  
\$1704



Band  
.33ct  
**RC 33/7654/24WR**  
G-H I1  
\$840

*Semi Mount 14k Y/W*

1ct 14K Y/W  
**UC 100/7658/23**  
G-H SI  
\$2760



Band  
1.10ct  
**UC 110/7658/23WR**  
G-H SI  
\$3030



## New Mounting Selections



.75ct 14K Y/W  
**RC 75/7141/24**  
G-H I1  
\$4029

Band  
.12ct

**RC 12/7141/24WR**  
G-H I1  
\$537



.55ct 14K Y/W  
**RC 55/7151/24**  
Holds 1ct center  
G-H I1  
\$1509

Band  
.75ct

**RC 75/7151/24WR**  
G-H I1  
\$2061



**NEW**



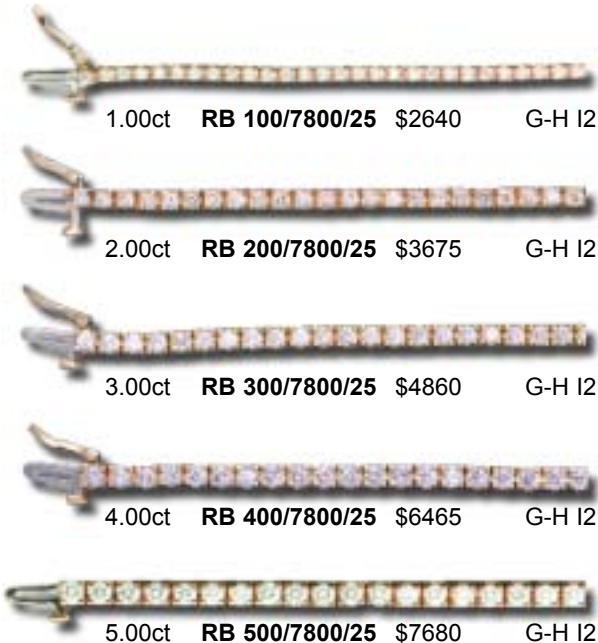
14K Y/W  
.14ct  
**RC 14/7224/24**  
Holds .33ct center  
G-H I1  
\$669



14K Y/W  
.13ct  
**RC 13/7553/24**  
G-H I1  
\$750



### Four Prong Round Diamond Tennis Bracelets 14K Y/W



1.00ct **RB 100/7800/25** \$2640 G-H I2

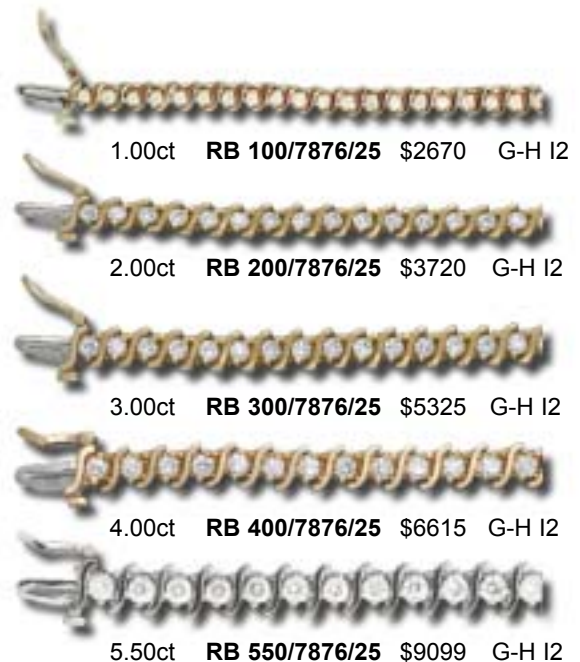
2.00ct **RB 200/7800/25** \$3675 G-H I2

3.00ct **RB 300/7800/25** \$4860 G-H I2

4.00ct **RB 400/7800/25** \$6465 G-H I2

5.00ct **RB 500/7800/25** \$7680 G-H I2

### "S" Link Style Round Diamond Tennis Bracelets 14K Y/W



1.00ct **RB 100/7876/25** \$2670 G-H I2

2.00ct **RB 200/7876/25** \$3720 G-H I2

3.00ct **RB 300/7876/25** \$5325 G-H I2

4.00ct **RB 400/7876/25** \$6615 G-H I2

5.50ct **RB 550/7876/25** \$9099 G-H I2

## Three Stone Selections

### Rounds, 14KW or TT



.75ct <b>RC 75/7929</b> G-H SI \$3105 G-H I1 \$2430	1.00ct <b>RC 100/7930</b> G-H SI \$4875 G-H I1 \$3585	1.50ct <b>RC 150/7931</b> G-H SI \$9450 G-H I1 \$6930	2.00ct <b>RC 200/7932</b> G-H SI1 \$18,450 G-H I1 \$13,380
--------------------------------------------------------------------	----------------------------------------------------------------------	----------------------------------------------------------------------	---------------------------------------------------------------------------

### Rounds, 14K Y/W



**NEW**

.80ct  
**RC 80/7228/24**  
Holds 1ct center  
G-H I1  
\$2205

### Rounds, 14K Y/W



**NEW**

1.25ct  
**RC 125/7226/24**  
G-H I1  
\$4125

### Round Crisscross 14K Y/W



1.00ct <b>RC 100/7381</b> G-H I1 \$3615 G-H SI1 \$4905	1.50ct <b>RC 150/7382</b> G-H I1 \$10,785 G-H SI \$14,100
-----------------------------------------------------------------------	--------------------------------------------------------------------------

### Princess Cut 14KW or TT



.45ct  
**UC 45/7348/23**  
G-H SI  
\$1635

### Princess Cut, 14K Y/W



1.00ct <b>UC 100/7347/23</b> G-H SI \$7710	1.50ct <b>UC 150/7347/23</b> G-H SI \$14,400
-----------------------------------------------------	-------------------------------------------------------

### Princess Cut, 14KW or TT



.75ct <b>UC 75/7340/23</b> G-H SI \$3015	1.50ct <b>UC 150/7342/23</b> G-H SI \$10,770
---------------------------------------------------	-------------------------------------------------------

### Princess Cut 14KW or TT



.75ct <b>UC 75/7324/23</b> G-H SI \$2640	1.00ct <b>UC 100/7325/23</b> G-H SI \$4650
---------------------------------------------------	-----------------------------------------------------

### Emerald Cut & Oval, 14KW or TT



1.25ct <b>UC 125/7360/22</b> G-H VS \$6450	1.00ct <b>UC 100/7310/23</b> G-H SI \$4800
-----------------------------------------------------	-----------------------------------------------------



.40ct 14K Y/W/TT  
**UC 40/7214/23**  
G-H SI \$1824

BAND 14K Y/W/TT  
.40ct  
**UC 40/7214/23WR**  
G-H SI \$1842



.20ct 14K Y/W  
**RC 20/7215/24**  
1/2ct Round Center  
G-H I1 \$615

BAND 14K Y/W  
.24ct  
**RC 24/7215/24WR**  
G-H I1 \$714



.30ct 14K Y/W  
**RC 30/7216/24**  
3/4ct Round Center  
G-H I1 \$825

BAND 14K Y/W  
.28ct  
**RC 28/7216/24WR**  
G-H I1 \$753



.30ct 14K Y/W  
**RC 30/7217/24**  
1ct Round Center  
G-H I1 \$840

BAND 14K Y/W  
.36ct  
**RC 36/7217/24WR**  
G-H I1 \$876



.24ct 14K Y/W  
**RC 24/7218/24**  
4mm Square Center  
G-H I1 \$690

BAND 14K Y/W  
.32ct  
**RC 32/7218/24WR**  
G-H I1 \$735



.24ct 14K Y/W  
**RC 24/7219/24**  
5mm Square Center  
G-H I1 \$744

BAND 14K Y/W  
.28ct  
**RC 28/7219/24WR**  
G-H I1 \$783



.12ct 14K Y/W  
**RC 12/7598/24**  
G-H I1 \$405

BAND 14K Y/W  
.09ct  
**RC 09/7598/24WR**  
G-H I1 \$384



.36ct 14K Y/W  
**RC 36/7596/24**  
G-H I1 \$876

BAND 14K Y/W  
.42ct  
**RC 42/7596/24WR**  
G-H I1 \$972



.30ct 14K Y/W  
**RC 30/7213/24**  
G-H I1 \$885

BAND 14K Y/W  
.36ct  
**RC 36/7213/24WR**  
G-H I1 \$981



.13ct 14K Y/W  
**UC 13/7403/23**  
G-H SI \$579

BAND 14K Y/W  
.25ct  
**UC 25/7403/23/WR**  
G-H SI \$924



.25ct 14K Y/W  
**UC 25/7404/23**  
G-H SI \$1077 GOLD  
\$1707 PLATINUM

BAND 14K Y/W  
.45ct  
**UC 45/7404/23/WR**  
G-H SI \$1860 GOLD



.37ct 14K Y/W  
**UC 37/7405/23**  
G-H SI \$1665 GOLD  
\$2217 PLATINUM

BAND 14K Y/W  
.55ct  
**UC 55/7405/23WR**  
G-H SI \$2400 GOLD



.25ct 14K Y/W  
**UC 25/2388/23**  
G-H SI \$675

BAND 14K Y/W  
.30ct  
**UC 30/2388/23/WR**  
G-H SI \$765



.42ct 14K Y/W  
**UC 42/2389/23**  
G-H SI \$1311

BAND 14K Y/W  
.58ct  
**UC 58/2389/23/WR**  
G-H SI \$1575



1.00ct 14K Y/W  
**UC 100/2390/23**  
G-H SI \$3465

BAND 14K Y/W  
1.25ct  
**UC 125/2390/23/WR**  
G-H SI \$4125



.53ct 14K Y/W  
**UC 53/2391/23**  
G-H SI \$1440

BAND 14K Y/W  
.37ct  
**UC 37/2391/23/WR**  
G-H SI \$1080

**Princess Cut Diamond Earrings**  
Available 14K Y/W with Friction Back

	.25ct	DE 25/7139/23	\$645	G-H SI
	.50ct	DE 50/7139/23	\$1509	G-H SI
	.75ct	DE 75/7139/23	\$2949	G-H SI
	1.00ct	DE 100/7139/23	\$5535	G-H SI
	1.50ct	DE 150/7139/23	\$13,650	G-H SI

**Better Quality Diamond Earrings Four Prong**  
Available 14K Y/W with Screwback

	.50ct	RE 50/7124/23	\$1605	G-H SI
	.75ct	RE 75/7124/23	\$3405	G-H SI
	1.00ct	RE 100/7124/23	\$6000	G-H SI

Call for larger sizes

**Diamond Earrings**  
14K Y/W



.50ct  
RF 50/7912/24  
G-H I1  
\$975

**Diamond Earrings**  
14K Y/W



1ct  
RE 100/7180/24  
G-H I1  
\$4065

**Diamond Earrings**  
14K Y/W



.66ct  
RF 66/7839/24  
G-H I1  
\$2046

**Three Stone Drop Diamond Earrings & Pendants**  
Three Prong, Available 14K Y/W

RV 50/7910/24	RV 75/7910/24	RV 100/7910/24	RV 150/7910/24	RF 50/7910/24	RF 100/7910/24	RF 150/7910/24	RF 200/7910/24
G-H I1	G-H I1	G-H I1	G-H I1	G-H I1	G-H I1	G-H I1	G-H I1
\$1296	\$2205	\$3630	\$7125	\$978	\$2265	\$4035	\$6690

**Three Stone Drop Diamond Earrings & Pendants**  
Four Prong, Available 14K Y/W

RV 25/7915/24	RV 50/7915/24	RV 100/7915/24	RF 50/7915/24	RF 100/7915/24	RF 200/7915/24
G-H I1	G-H I1	G-H I1	G-H I1	G-H I1	G-H I1
\$639	\$1311	\$3600	\$1014	\$2385	\$6840

Earrings Are Flexible

**Three Stone Drop Diamond Pendants**  
Available 14K Y/W

<b>.10ct</b> RV 10/7918/24 G-H I1 \$345	<b>.25ct</b> RV 25/7918/24 G-H I1 \$765	<b>.50ct</b> RV 50/7918/24 G-H I1 \$1386
--------------------------------------------------	--------------------------------------------------	---------------------------------------------------

**Promotional Quality Heart**  
14K Y/W

**.11ct**  
RP 11/7136/PQ  
Promotional  
Quality  
\$315

**Three Stone Drop Diamond Pendants**  
Princess Cut, Available 14K Y/W

<b>.18ct</b> UV 18/7495/23 G-H SI \$573	<b>.43ct</b> UV 43/7495/23 G-H SI \$1380
--------------------------------------------------	---------------------------------------------------

**Three Stone Diamond Pendants**  
Available 14K Y/W

Assembled with  
18" cable chain

<b>.25ct</b>	<b>RV 25/7385/24</b>	<b>\$777</b>	<b>G-H I1</b>
<b>.50ct</b>	<b>RV 50/7385/24</b>	<b>\$1425</b>	<b>G-H I1</b>
<b>.75ct</b>	<b>RV 75/7385/24</b>	<b>\$2535</b>	<b>G-H I1</b>

**Diamond Cross Pendants**  
Available 14K Y/W

<b>.45ct</b> RV 45/7111/24 G-H I1 \$909	<b>.65ct</b> RV 65/7111/24 G-H I1 \$1320
--------------------------------------------------	---------------------------------------------------

*Life Pendants can be made to your specifications. Mix colored diamonds to create that special piece.*

**RV7580**      **RV7560**

**"Life Pendants" 14K Y/W**  
Pricing shown for Round Pendant

<b>.50ct TW</b> RV 50/7560/24 G-H I1 \$1290	<b>1ct TW</b> RV 100/7560/24 G-H I1 \$2100
------------------------------------------------------	-----------------------------------------------------

**\*Pendants include an 18" rope chain. Substitutions are available.**

**Diamond Drop Pendants**  
Available 14K Y/W

<b>.25ct</b> RV 25/7714/24 G-H I1 \$825	<b>.50ct</b> RV 50/7710/24 G-H I1 \$1140
--------------------------------------------------	---------------------------------------------------

**Matching Earrings & Pendants, Available 14K Y/W**

<b>Earrings</b> .80ct RF 80/7848/24 G-H I1 \$2340	<b>Pendant</b> .33ct RV 33/7848/24 G-H I1 \$1065	<b>Earring Jackets</b> .80ct RF 80/7721/24 G-H I1 \$2070	<b>Pendant</b> .40ct RV 40/7721/24 G-H I1 \$1155	<b>Earrings</b> .25ct RF 25/7254/24 G-H I1 \$684	<b>Pendant</b> .25ct RV 25/7254/24 G-H I1 \$639
---------------------------------------------------------------	--------------------------------------------------------------	----------------------------------------------------------------------	--------------------------------------------------------------	--------------------------------------------------------------	-------------------------------------------------------------