

Jan - Feb 2007



Southeastern
Findings, Mountings, Tools and Wedding Bands



Low Introductory Pricing

Southeastern

Findings, Mountings, Tools and Wedding Bands

PENDANTS



P735, 14k Y or W

.25ct	1ea .01, .03, .05, .07, .09ct	\$201
.50ct	1ea .05, .08, .10, .12, .15ct	\$237
.75ct	1ea .05, .10, .15, .20, .25ct	\$246
1ct	1ea .10, .15, .20, .25, .30ct	\$275
1.50ct	1ea .20, .25, .30, .35, .40ct	\$294
2ct	1ea .20, .30, .40, .50, .60ct	\$306



P728, 14k Y or W

1ct	2ea .025, .04, .06, .07, .09, .12ct	
	3) .015ct & 1) .15ct	\$226
1.30ct	2ea .03, .05, .07, .10, .12, .15	
	1) .20ct & 3) .02ct	\$245
1.65ct	1ea .02, .05, .06	
	2ea .01, .015, .03, .04ct	\$323



P729, 14k Y or W

.75ct	
1ea) .05, .15, .20ct	
3) .03 & 12) .02ct	\$377



P730, 14k Y or W

.75ct	2) .12, 4) .03, .05 & 1) .02, .15ct	\$217
1ct	2) .12, 4) .05, .10 & 1) .03, .15ct	\$243
1.25ct	1) .15, 2) .03, .04, .05, .06, .07, .08, .10, .14ct	\$318
1.50ct	2) .15, 4) .10, .12 & 1) .05, .25ct	\$321
2ct	2) .25, 4) .11, .16 & 1) .06, .35ct	\$346

Journey Pendants

Low Introductory Pricing

Southeastern

Findings, Mountings, Tools and Wedding Bands

Flexible



P732, 14k Y or W

.25ct	1ea .01, .03, .05, .07, .09ct	\$224
.50ct	1ea .05, .08, .10, .12, .15ct	\$290
.75ct	1ea .05, .10, .15, .20, .25ct	\$335
1ct	1ea .10, .15, .20, .25, .30ct	\$367
1.50ct	1ea .20, .25, .30, .35, .40ct	\$468
2ct	1ea .20, .30, .40, .50, .60ct	\$515



P733, 14k Y or W

.25ct	1ea .01, .03, .05, .07, .09ct	\$94
.50ct	1ea .05, .08, .10, .12, .15ct	\$131
.75ct	1ea .05, .10, .15, .20, .25ct	\$154
1ct	1ea .10, .15, .20, .25, .30ct	\$178
1.50ct	1ea .20, .25, .30, .35, .40ct	\$197
2ct	1ea .20, .30, .40, .50, .60ct	\$235



P734, 14k Y or W

.25ct	1ea .01, .03, .05, .07, .09ct	\$225
.50ct	1ea .05, .08, .10, .12, .15ct	\$282
.75ct	1ea .05, .10, .15, .20, .25ct	\$288
1ct	1ea .10, .15, .20, .25, .30ct	\$311
1.50ct	1ea .20, .25, .30, .35, .40ct	\$368
2ct	1ea .20, .30, .40, .50, .60ct	\$374



P725, 14k Y or W

.25ct	1ea .01, .03, .05, .07, .09ct	\$121
.50ct	1ea .05, .08, .10, .12, .15ct	\$150
.75ct	1ea .05, .10, .15, .20, .25ct	\$178
1ct	1ea .10, .15, .20, .25, .30ct	\$187
1.50ct	1ea .20, .25, .30, .35, .40ct	\$216
2ct	1ea .20, .30, .40, .50, .60ct	\$254



P727, 14k Y or W

.25ct	1ea .01, .03, .05, .07, .09ct	\$85
.50ct	1ea .05, .08, .10, .12, .15ct	\$103
.75ct	1ea .05, .10, .15, .20, .25ct	\$121
1ct	1ea .10, .15, .20, .25, .30ct	\$126
1.50ct	1ea .20, .25, .30, .35, .40ct	\$159
2ct	1ea .20, .30, .40, .50, .60ct	\$178

PENDANTS

Memories Required

NEW MOUNTINGS

Available 14k Yellow or White

11-649

10) 1.5m SQ
\$319

11-649WR

14) 1.5m SQ
\$330



Shared Prong

6-2232

17) .25ct
\$284

6-2236

18) .20ct
\$334

6-2237

15) .35ct
\$414



Journey Style Ring

18-372

1) .17, .30, .02,
.03, .04, .08, .10ct
\$475



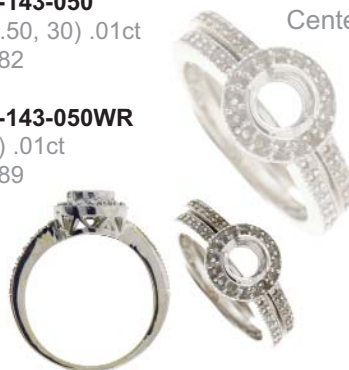
Half-Bezel
Setting for
Center Stone

13-143-050

1) .50, 30) .01ct
\$282

13-143-050WR

14) .01ct
\$189



Low Introductory Pricing

WEDDING BAND SPECIAL

6mm Ladies & Gents' Satin with Brite Edge

WB-06-01

6mm
14k Y or W
Sz 6...\$526
Sz 10...\$633



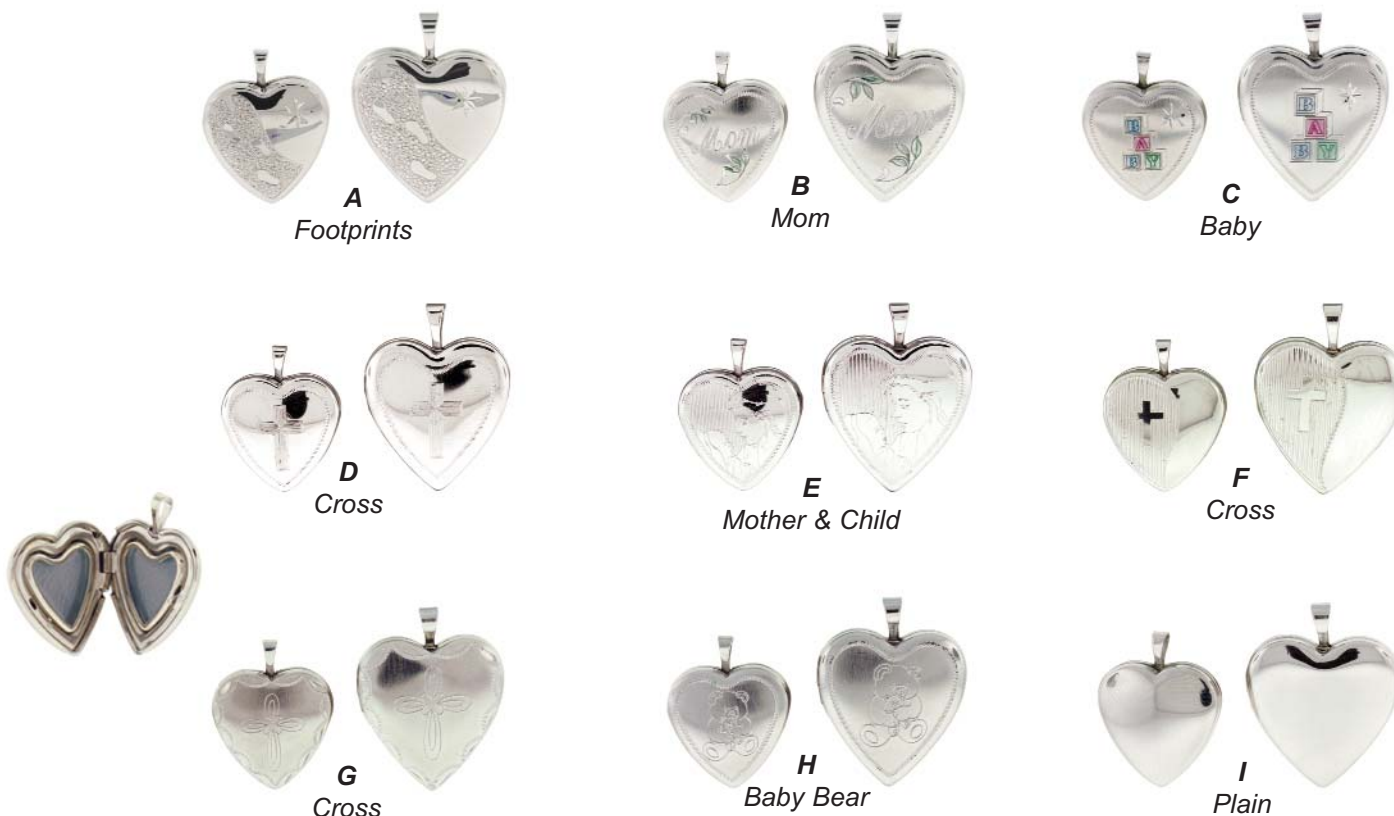
8mm Gents' Satin with 3 Stripes

WB-08-13

8mm
14k Y or W
Sz 10...\$810



LOCKETS



Locket available in Gold Filled or Sterling Silver.

Add "S" to the end of the part number for silver and "F" for gold filled.

Part	Size	SS \$	GF \$	Part	Size	SS \$	GF \$
A S7200	16mm	\$28	\$37	F S7210	16mm	\$28	\$37
A S7201	20mm	\$33	\$43	F S7211	20mm	\$33	\$43
B S7202	16mm	\$28	\$37	G S7212	16mm	\$28	\$37
B S7203	20mm	\$33	\$43	G S7213	20mm	\$33	\$43
C S7204	16mm	\$28	\$37	H S7214	16mm	\$28	\$37
C S7205	20mm	\$33	\$43	H S7215	20mm	\$33	\$43
D S7206	16mm	\$28	\$37	I S7216	16mm	\$28	\$37
D S7207	20mm	\$33	\$43	I S7217	20mm	\$33	\$43
E S7208	16mm	\$28	\$37				
E S7209	20mm	\$33	\$43				

Low Introductory Pricing

Palladium Solders, 1dwt. Sheets

Part	Description	Melt Pt F	Flow Point F	Use	Price
PALL-E	Easy Palladium	1855	2005	Fabrication	\$99
PALL-H	Hard Palladium	2060	2210	Sizing	\$143
PALL-M	Medium Palladium	2215	2365	Fabrication	\$115

Chipped Solders, 1dwt. Vials

Part	Description	Melt Pt F	Flow Point F	Use	Price
14KCLP-HW	14k White Hard Plumb	1330	1380	Sizing	\$95
14KCLP-H	14k Yellow Hard Plumb	1410	1460	Sizing	\$95
14KCLP-M	14k Yellow Medium Plumb	1230	1360	Gen Repair	\$95
14KCLPW	14k White Easy Plumb	1235	1270	Small Heads	\$95
				Earring Posts	
14KCLP	14k Yellow Easy Plumb	1080	1320	Small Heads	\$95
				Earring Posts	

SOLDER

NEW ARRIVALS FROM FOREDOM®



NEW Improved Version SR Motor

- * More powerful 1/6 HP ballbearing 18,000 RPM motor
- * Forward and reverse direction with switch on motor
- * Lower operating temperatures for longer motor life
- * More efficient for less electricity consumption
- * Full 2 year manufacturers warranty

T-1100....\$495.00

NEW Jewelers Kit with SR Motor

Kit Includes:

- * SR Motor
- * FCT foot control
- * #30® handpiece
- * 54- Piece jewelers professional accessory kit with rotating bur and tool holder

TJK2....\$605.25



#20 Quick Change Duplex Spring Handpiece

This item is the same as the THP20 with a duplex spring, which provides extra flexibility when more precise control for delicate work is required. The spring drive is made of special steel, double wound, tubular construction with a protective flexible spring cover. Replacement springs are available by special order and can be installed by the user.

Duplex springs are subject to breakage and are not covered by warranty. It is recommended that only experienced users of flex shaft tools and/or those whose work demands added flexibility consider this style handpiece.

THP20D....\$222.75



#20 Quick Change Handpiece

This item has a molded plastic front grip with tapered sides for easy and close handling. It has pre-lubed ballbearings that do not need further lubrication.

THP20....\$177.75

Triple Key



Handpiece Rest

Slip this handy item onto your motor hanger with 1/2 " or smaller diameter pole to secure your handpiece when not in use. The back cut-out holds the motor cord away from your work.

THR1....\$18.00

Standard Motor Hanger

Comes with a mounting clamp for attaching to bench tops, accessory tray and a handpiece rest.

TMH5....\$87.75



FOREDOM®

FOREDOM®

Please see sefindings.com or our Tool Catalog for a complete listing of Foredom® products.



#52 Flex Shaft Hand Piece

Comes with 3/32" (2.35mm) collet.
 Quick release push-pull action.

THP52 \$315.00



Foredom® Foot Control - FCT

Electronic foot control with heavy duty plastic housing. For use with Series: CC, S, DD, EE, GG and F machines (115V)

T-FC-1 \$94.50

FOREDOM®



#30 Flex Shaft Hand Piece

Comes with #0 Jacobs chuck with 0-5/32" (4mm) capacity and new CK-O chuck key with molded plastic handle.

THP30 \$146.25



#10 Flex Shaft Hand Piece

Quick release action. To insert accessory, rotate lever 180° toward the back end of the hand piece. Insert, then move the lever forward 180° into the locked position.

THP10 \$425.25

Triple Key



Mounted Silicone Polishers

These high quality German made silicone polishers are for all polishing applications and come in three grits.

Sold per package of 12.

Part #	Description	Grit	Dia. x Length	Cost
T-753	Cone	Coarse	5.5 x 15.5mm	\$27.90 dz
T-754	Barrel	Coarse	6 x 11.5mm	\$27.90 dz
T-755	Wheel	Coarse	11 x 2mm	\$27.90 dz
T-756	Knife-Edge	Coarse	11 x 1mm	\$27.90 dz
T-757	Cone	Fine	5.5 x 15.5mm	\$27.90 dz
T-758	Barrel	Fine	6 x 11.5mm	\$27.90 dz
T-759	Wheel	Fine	11 x 2mm	\$27.90 dz
T-760	Knife-Edge	Fine	11 x 1mm	\$27.90 dz
T-761	Cone	Extra-Fine	5.5 x 15.5mm	\$27.90 dz
T-762	Barrel	Extra-Fine	6 x 11.5mm	\$27.90 dz
T-763	Wheel	Extra-Fine	11 x 2mm	\$27.90 dz
T-764	Knife-Edge	Extra-Fine	11 x 1mm	\$27.90 dz



Snap on Mandrel

T-526....\$4.29



3/32" Mandrel

T-527....\$2.22

Maxi-Shear Flush Cutter

A large, strong and durable shear ideal for use in a variety of cutting situations. Delivers a clean, square cut with minimal effort while our Light Touch™ return spring speeds work. Head shape allows excellent sight lines to help increase precision. Cushioned, Xuro-Rubber™ grips add comfort during extended work periods. Glare eliminating finish reduces eye strain. Rated for cutting everything from delicate materials less than 1 mil. thick up to 16 AWG copper wire.

T902 \$35.79

Xuro-Rubber Grips™



New By XURON®

HWAC Shear

HWAC stands for Hard Wire And Cable. The HWAC is rated for hardened wire, music wire, memory wire and throttle cable. It does not require any special cutting technique. This is an ideal tool for crafters who need to cut a wide variety of materials.

Use our HWAC Cutter like any cutter: place the material between the jaws at the desired location and squeeze on the handles. Cutting effort is minimal due to the tools' shearing action. Cushioned Xuro-Rubber™ grips for comfort and Light Touch™ spring action returns HWAC to its open position.

T-903 \$40.32

Xuro-Rubber Grips™



Numbered Repair Envelopes

These envelopes offer a three part design. A receipt for the customer, a receipt for your records and a lay-away area on the back.

sold in boxes of 1000

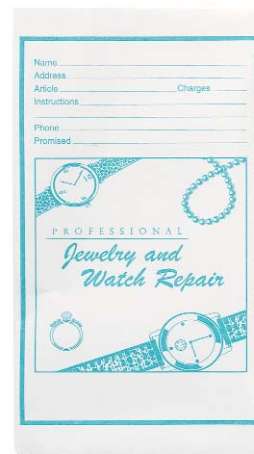
- T-671** # 0001-1000 **\$106.65**
- T-671-2** # 1001-2000 **\$106.65**
- T-671-3** # 2001-3000 **\$106.65**
- T-671-4** # 3001-4000 **\$106.65**
- T-671-5** # 4001-5000 **\$106.65**
- T-671-6** # 5001-6000 **\$106.65**
- T-671-7** # 6001-7000 **\$106.65**
- T-671-8** # 7001-8000 **\$106.65**
- T-671-9** # 8001-9000 **\$106.65**
- T-671-10** # 9001-10000 **\$106.65**



Repair Envelope Holder

Storage space equals
3 1/4" x 14"

T-671H....\$45.00



Repair Envelopes

Backside of envelopes list birthstones and appropriate gifts for each wedding anniversary. There is a space at the bottom where the retailer can stamp their name.

Sold in boxes of 500

T-632....\$51.48